

Datasheet for ABIN7180136

anti-Superoxide dismutase copper chaperone antibody (C-Term)



[Go to Product page](#)

1 Image

Overview

| | |
|----------------------|--|
| Quantity: | 100 µL |
| Target: | Superoxide dismutase copper chaperone (CCS) |
| Binding Specificity: | C-Term |
| Reactivity: | Human |
| Host: | Rabbit |
| Clonality: | Polyclonal |
| Conjugate: | This Superoxide dismutase copper chaperone antibody is un-conjugated |
| Application: | Western Blotting (WB), ELISA |

Product Details

| | |
|-------------------|---|
| Immunogen: | Synthesized peptide derived from C-terminal of Human CCS. |
| Isotype: | IgG |
| Cross-Reactivity: | Human |
| Purification: | The antibody was affinity-purified from rabbit antiserum by affinity-chromatography using epitope-specific immunogen. |

Target Details

| | |
|-------------------|---|
| Target: | Superoxide dismutase copper chaperone (CCS) |
| Alternative Name: | CCS (CCS Products) |
| Background: | Background: Delivers copper to copper zinc superoxide dismutase (SOD1). |

Target Details

Culotta V.C., J. Biol. Chem. 272:23469-23472(1997).

Halleck A., Submitted (JUN-2004) to the EMBL/GenBank/DDBJ databases.

Casareno R.L.B., J. Biol. Chem. 273:23625-23628(1998).

Aliases: CCS antibody, CCS_HUMAN antibody, Copper chaperone for superoxide dismutase antibody, MGC138260 antibody, SOD 4 antibody, SOD4 antibody, Superoxide dismutase copper chaperone antibody

UniProt: [O14618](#)

Pathways: [Transition Metal Ion Homeostasis](#)

Application Details

Application Notes: WB:1:500-1:3000,

Restrictions: For Research Use only

Handling

Format: Liquid

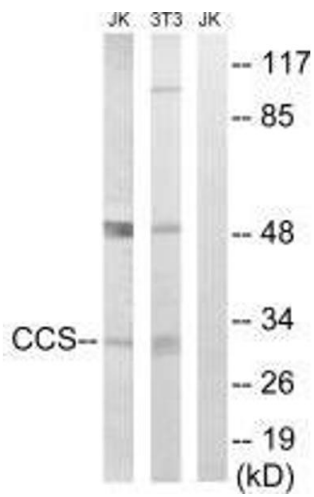
Buffer: Rabbit IgG in phosphate buffered saline (without Mg²⁺ and Ca²⁺), pH 7.4, 150 mM NaCl, 0.02 % sodium azide and 50 % glycerol.

Preservative: Sodium azide

Precaution of Use: This product contains Sodium azide: a POISONOUS AND HAZARDOUS SUBSTANCE which should be handled by trained staff only.

Storage: -20 °C,-80 °C

Storage Comment: Upon receipt, store at -20°C or -80°C. Avoid repeated freeze.



Western Blotting

Image 1. Western blot analysis of extracts from Jurkat cells and 3T3 cells, using CCS antibody.