

Datasheet for ABIN7180142
anti-CLCNKA antibody (C-Term)



[Go to Product page](#)

1 Image

Overview

Quantity:	100 µL
Target:	CLCNKA
Binding Specificity:	C-Term
Reactivity:	Human
Host:	Rabbit
Clonality:	Polyclonal
Conjugate:	This CLCNKA antibody is un-conjugated
Application:	Western Blotting (WB), ELISA

Product Details

Immunogen:	Synthesized peptide derived from C-terminal of Human CLCNKA.
Isotype:	IgG
Cross-Reactivity:	Human
Purification:	The antibody was affinity-purified from rabbit antiserum by affinity-chromatography using epitope-specific immunogen.

Target Details

Target:	CLCNKA
Alternative Name:	CLCNKA (CLCNKA Products)
Background:	Background: Voltage-gated chloride channel. Chloride channels have several functions

Target Details

including the regulation of cell volume, membrane potential stabilization, signal transduction and transepithelial transport. May be important in urinary concentrating mechanisms.

Kieferle S., Proc. Natl. Acad. Sci. U.S.A. 91:6943-6947(1994).

Gregory S.G., Nature 441:315-321(2006).

Estevez R., Nature 414:558-561(2001).

Aliases: CLCNKAChloride channel protein ClC-Ka antibody, Chloride channel Ka antibody, ClC-K1 antibody

UniProt: [P51800](#)

Pathways: [Response to Water Deprivation](#)

Application Details

Application Notes: WB:1:500-1:3000,

Restrictions: For Research Use only

Handling

Format: Liquid

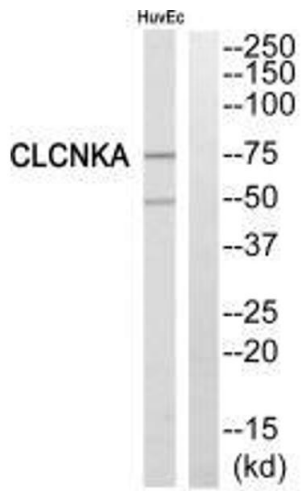
Buffer: Rabbit IgG in phosphate buffered saline (without Mg²⁺ and Ca²⁺), pH 7.4, 150 mM NaCl, 0.02 % sodium azide and 50 % glycerol.

Preservative: Sodium azide

Precaution of Use: This product contains Sodium azide: a POISONOUS AND HAZARDOUS SUBSTANCE which should be handled by trained staff only.

Storage: -20 °C,-80 °C

Storage Comment: Upon receipt, store at -20°C or -80°C. Avoid repeated freeze.



Western Blotting

Image 1. Western blot analysis of extracts from HuvEc cells, using CLCNKA antibody.