

Datasheet for ABIN7180144
anti-CLNS1A antibody (C-Term)[Go to Product page](#)

1 Image

Overview

Quantity:	100 µL
Target:	CLNS1A
Binding Specificity:	C-Term
Reactivity:	Human
Host:	Rabbit
Clonality:	Polyclonal
Conjugate:	This CLNS1A antibody is un-conjugated
Application:	Western Blotting (WB), ELISA

Product Details

Immunogen:	Synthesized peptide derived from C-terminal of Human CLNS1A.
Isotype:	IgG
Cross-Reactivity:	Human
Purification:	The antibody was affinity-purified from rabbit antiserum by affinity-chromatography using epitope-specific immunogen.

Target Details

Target:	CLNS1A
Alternative Name:	CLNS1A (CLNS1A Products)
Background:	Background: Chaperone that regulates the assembly of spliceosomal U1, U2, U4 and U5 small

Target Details

nuclear ribonucleoproteins (snRNPs), the building blocks of the spliceosome. Thereby, plays an important role in the splicing of cellular pre-mRNAs. Most spliceosomal snRNPs contain a common set of Sm proteins SNRPB, SNRPD1, SNRPD2, SNRPD3, SNRPE, SNRPF and SNRPG that assemble in a heptameric protein ring on the Sm site of the small nuclear RNA to form the core snRNP. In the cytosol, the Sm proteins SNRPD1, SNRPD2, SNRPE, SNRPF and SNRPG are trapped in an inactive 6S pICln-Sm complex by the chaperone CLNS1A that controls the assembly of the core snRNP. Dissociation by the SMN complex of CLNS1A from the trapped Sm proteins and their transfer to an SMN-Sm complex triggers the assembly of core snRNPs and their transport to the nucleus. May also indirectly participate in cellular volume control by activation of a swelling-induced chloride conductance pathway.

Buyse G., Biochem. Biophys. Res. Commun. 218:822-827(1996).

Anquita J., Biochem. Biophys. Res. Commun. 208:89-95(1995).

Lamb F.S., Submitted (JUL-1996) to the EMBL/GenBank/DDBJ databases.

Aliases: Chloride channel antibody, Chloride channel nucleotide sensitive 1A antibody, Chloride channel regulatory protein antibody, Chloride conductance regulator, volume sensitive antibody, Chloride conductance regulatory protein ICln antibody, Chloride ion current inducer protein antibody, ClCl antibody, CLNS 1A antibody, Clns1a antibody, CLNS1B antibody, I(Cln) antibody, ICln antibody, ICLN_HUMAN antibody, Methylosome subunit pICln antibody, nucleotide sensitive 1A antibody, Reticulocyte pICln antibody, Reticulocyte protein ICln antibody

UniProt: [P54105](#)

Pathways: [Ribonucleoprotein Complex Subunit Organization](#)

Application Details

Application Notes: WB:1:500-1:3000,

Restrictions: For Research Use only

Handling

Format: Liquid

Buffer: Rabbit IgG in phosphate buffered saline (without Mg²⁺ and Ca²⁺), pH 7.4, 150 mM NaCl, 0.02 % sodium azide and 50 % glycerol.

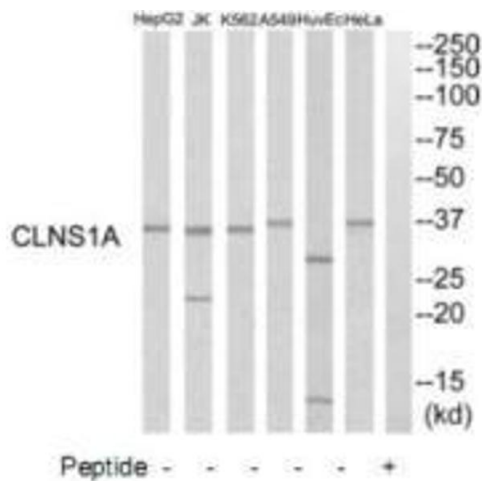
Preservative: Sodium azide

Precaution of Use: This product contains Sodium azide: a POISONOUS AND HAZARDOUS SUBSTANCE which

Handling

	should be handled by trained staff only.
Storage:	-20 °C,-80 °C
Storage Comment:	Upon receipt, store at -20°C or -80°C. Avoid repeated freeze.

Images



Western Blotting

Image 1. Western blot analysis of extracts from HuvEc cells, K562 cells, HeLa cells, HepG2 cells, A549 cells and Jurkat cells, using CLNS1A antibody.