



[Go to Product page](#)

Datasheet for ABIN7180146
anti-CYP1B1 antibody (C-Term)

1 Image

Overview

Quantity:	100 µL
Target:	CYP1B1
Binding Specificity:	C-Term
Reactivity:	Human
Host:	Rabbit
Clonality:	Polyclonal
Conjugate:	This CYP1B1 antibody is un-conjugated
Application:	Western Blotting (WB), ELISA

Product Details

Immunogen:	Synthesized peptide derived from C-terminal of Human CP1B1.
Isotype:	IgG
Cross-Reactivity:	Human
Purification:	The antibody was affinity-purified from rabbit antiserum by affinity-chromatography using epitope-specific immunogen.

Target Details

Target:	CYP1B1
Alternative Name:	CYP1B1 (CYP1B1 Products)
Background:	Background: Cytochromes P450 are a group of heme-thiolate monooxygenases. In liver

Target Details

microsomes, this enzyme is involved in an NADPH-dependent electron transport pathway. It oxidizes a variety of structurally unrelated compounds, including steroids, fatty acids, retinoid and xenobiotics. Preferentially oxidizes 17beta-estradiol to the carcinogenic 4-hydroxy derivative, and a variety of procarcinogenic compounds to their activated forms, including polycyclic aromatic hydrocarbons. Promotes angiogenesis by removing cellular oxygenation products, thereby decreasing oxidative stress, release of antiangiogenic factor THBS2, then allowing endothelial cells migration, cell adhesion and capillary morphogenesis. These changes are concomitant with the endothelial nitric oxide synthase activity and nitric oxide synthesis. Plays an important role in the regulation of perivascular cell proliferation, migration, and survival through modulation of the intracellular oxidative state and NF-kappa-B expression and/or activity, during angiogenesis. Contributes to oxidative homeostasis and ultrastructural organization and function of trabecular meshwork tissue through modulation of POSTN expression.

Sutter T.R., J. Biol. Chem. 269:13092-13099(1994).

Tang Y.M., J. Biol. Chem. 271:28324-28330(1996).

Gorry M.C., Submitted (NOV-2001) to the EMBL/GenBank/DDBJ databases.

Aliases: Aryl hydrocarbon hydroxylase antibody, CP1B antibody, CP1B1_HUMAN antibody, Cyp1b1 antibody, CYPIB1 antibody, Cytochrome P450 1B1 antibody, Cytochrome P450 family 1 subfamily B polypeptide 1 antibody, Cytochrome P450 subfamily I (dioxin inducible) polypeptide 1 (glaucoma 3 primary infantile) antibody, Flavoprotein linked monooxygenase antibody, GLC3A antibody, Microsomal monooxygenase antibody, P4501B1 antibody, Xenobiotic monooxygenase antibody

UniProt: [Q16678](#)

Pathways: [Steroid Hormone Biosynthesis](#)

Application Details

Application Notes: WB:1:500-1:3000,

Restrictions: For Research Use only

Handling

Format: Liquid

Buffer: Rabbit IgG in phosphate buffered saline (without Mg²⁺ and Ca²⁺), pH 7.4, 150 mM NaCl,

Handling

0.02 % sodium azide and 50 % glycerol.

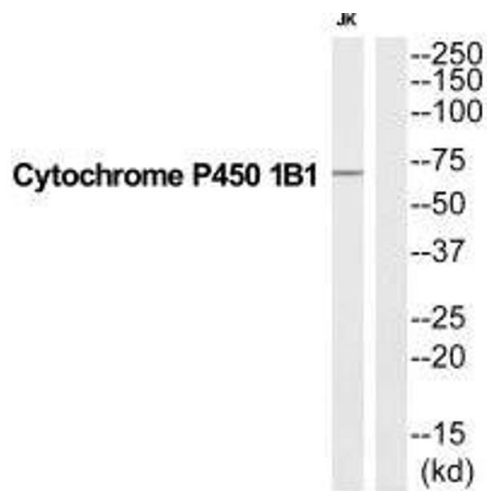
Preservative: Sodium azide

Precaution of Use: This product contains Sodium azide: a POISONOUS AND HAZARDOUS SUBSTANCE which should be handled by trained staff only.

Storage: -20 °C,-80 °C

Storage Comment: Upon receipt, store at -20°C or -80°C. Avoid repeated freeze.

Images



Western Blotting

Image 1. Western blot analysis of extracts from Jurkat cells, using CP1B1 antibody.