



[Go to Product page](#)

Datasheet for ABIN7180159  
**anti-DLX4 antibody (C-Term)**

1 Image

Overview

Quantity:	100 µL
Target:	DLX4
Binding Specificity:	C-Term
Reactivity:	Human
Host:	Rabbit
Clonality:	Polyclonal
Conjugate:	This DLX4 antibody is un-conjugated
Application:	Western Blotting (WB), ELISA

Product Details

Immunogen:	Synthesized peptide derived from C-terminal of Human DLX4.
Isotype:	IgG
Cross-Reactivity:	Human
Purification:	The antibody was affinity-purified from rabbit antiserum by affinity-chromatography using epitope-specific immunogen.

Target Details

Target:	DLX4
Alternative Name:	DLX4 ( <a href="#">DLX4 Products</a> )
Background:	Background: May play a role in determining the production of hemoglobin S. May act as a

## Target Details

---

repressor.

Nakamura S., Genomics 38:314-324(1996).

Price J.A., Hum. Mol. Genet. 7:563-569(1998).

Haga S.B., Leukemia 14:1867-1875(2000).

Aliases: Beta protein 1 antibody, BP1 antibody, Distal less homeo box 7 antibody, Distal less homeo box 9 antibody, distal-less homeobox 4 antibody, DLX4 antibody, DLX4\_HUMAN antibody, DLX7 antibody, DLX8 antibody, DLX9 antibody, Homeobox protein DLX-4 antibody, Homeobox protein DLX-7 antibody, Homeobox protein DLX-8 antibody, Homeobox protein DLX4 antibody

---

UniProt: [Q92988](#)

## Application Details

---

Application Notes: WB:1:500-1:3000,

Restrictions: For Research Use only

## Handling

---

Format: Liquid

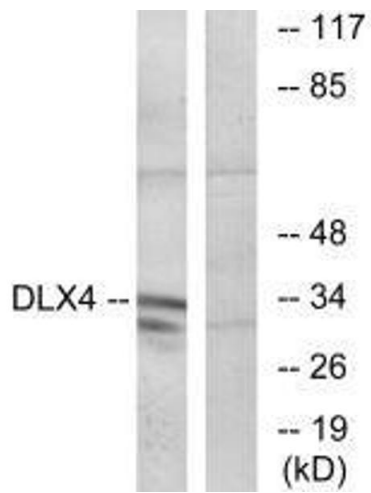
Buffer: Rabbit IgG in phosphate buffered saline (without Mg<sup>2+</sup> and Ca<sup>2+</sup>), pH 7.4, 150 mM NaCl, 0.02 % sodium azide and 50 % glycerol.

Preservative: Sodium azide

Precaution of Use: This product contains Sodium azide: a POISONOUS AND HAZARDOUS SUBSTANCE which should be handled by trained staff only.

Storage: -20 °C,-80 °C

Storage Comment: Upon receipt, store at -20°C or -80°C. Avoid repeated freeze.



### Western Blotting

**Image 1.** Western blot analysis of extracts from COLO cells, using DLX4 antibody.