

Datasheet for ABIN7180162
anti-DPYSL2 antibody (C-Term)



[Go to Product page](#)

2 Images

Overview

Quantity:	100 µL
Target:	DPYSL2
Binding Specificity:	C-Term
Reactivity:	Human
Host:	Rabbit
Clonality:	Polyclonal
Conjugate:	This DPYSL2 antibody is un-conjugated
Application:	Western Blotting (WB), ELISA

Product Details

Immunogen:	Synthesized peptide derived from C-terminal of Human DPYSL2.
Isotype:	IgG
Cross-Reactivity:	Human, Mouse, Rat
Purification:	The antibody was affinity-purified from rabbit antiserum by affinity-chromatography using epitope-specific immunogen.

Target Details

Target:	DPYSL2
Alternative Name:	DPYSL2 (DPYSL2 Products)
Background:	Background: Plays a role in neuronal development and polarity, as well as in axon growth and

Target Details

guidance, neuronal growth cone collapse and cell migration. Necessary for signaling by class 3 semaphorins and subsequent remodeling of the cytoskeleton. May play a role in endocytosis.

Goshima Y., Nature 376:509-514(1995).

Hamajima N., Gene 180:157-163(1996).

Kitamura K., DNA Res. 6:291-297(1999).

Aliases: Collapsin response mediator protein 2 antibody, Collapsin response mediator protein antibody, Collapsin response mediator protein hCRMP 2 antibody, CRAM antibody, CRMP 2 antibody, CRMP-2 antibody, CRMP2 antibody, DHPRP 2 antibody, DHPRP2 antibody, Dihydropyrimidinase 2 antibody, Dihydropyrimidinase like 2 antibody, Dihydropyrimidinase like 2 long form antibody, Dihydropyrimidinase related protein 2 antibody, Dihydropyrimidinase-related protein 2 antibody, DPYL 2 antibody, DPYL2 antibody, DPYL2_HUMAN antibody, DPYSL 2 antibody, Dpysl2 antibody, DRP-2 antibody, DRP2 antibody, Musunc 33 antibody, Musunc33 antibody, N2A3 antibody, TOAD 64 antibody, TOAD64 antibody, ULIP 2 protein antibody, ULIP-2 antibody, Ulip2 antibody, Unc-33-like phosphoprotein 2 antibody

UniProt: [Q16555](#)

Pathways: [Regulation of Cell Size](#)

Application Details

Application Notes: WB:1:500-1:3000,

Restrictions: For Research Use only

Handling

Format: Liquid

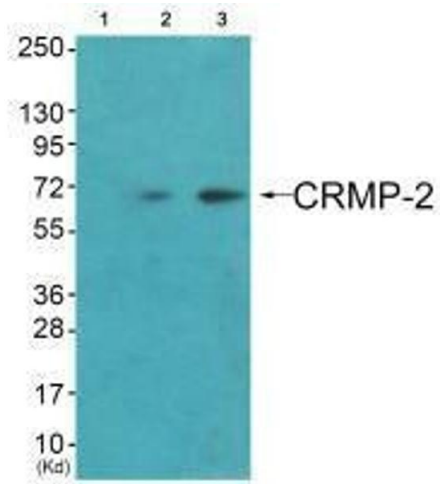
Buffer: Rabbit IgG in phosphate buffered saline (without Mg²⁺ and Ca²⁺), pH 7.4, 150 mM NaCl, 0.02 % sodium azide and 50 % glycerol.

Preservative: Sodium azide

Precaution of Use: This product contains Sodium azide: a POISONOUS AND HAZARDOUS SUBSTANCE which should be handled by trained staff only.

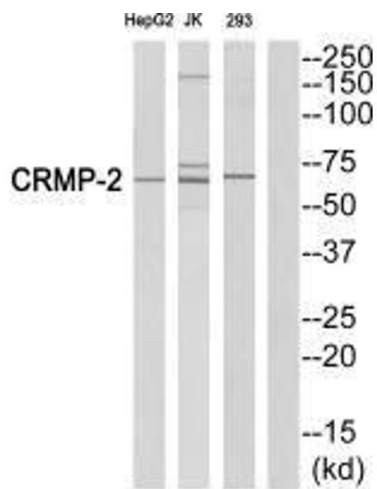
Storage: -20 °C,-80 °C

Storage Comment: Upon receipt, store at -20°C or -80°C. Avoid repeated freeze.



Western Blotting

Image 1. Western blot analysis of extracts from HuvEc cells (Lane 2) and JK cells (Lane 3), using CRMP-2 (Ab-522) antibody. The lane on the left is treated with synthesized peptide.



Western Blotting

Image 2. Western blot analysis of extracts from HepG2 cells, Jurkat cells and 293 cells, using CRMP-2 (Ab-522) antibody.