



[Go to Product page](#)

Datasheet for ABIN7180165
anti-EGR2 antibody (C-Term)

1 Image

Overview

Quantity:	100 µL
Target:	EGR2
Binding Specificity:	C-Term
Reactivity:	Human
Host:	Rabbit
Clonality:	Polyclonal
Conjugate:	This EGR2 antibody is un-conjugated
Application:	Western Blotting (WB), ELISA

Product Details

Immunogen:	Synthesized peptide derived from C-terminal of Human EGR2.
Isotype:	IgG
Cross-Reactivity:	Human, Mouse, Rat
Purification:	The antibody was affinity-purified from rabbit antiserum by affinity-chromatography using epitope-specific immunogen.

Target Details

Target:	EGR2
Alternative Name:	EGR2 (EGR2 Products)
Background:	Background: Sequence-specific DNA-binding transcription factor. Binds to two specific DNA

Target Details

sites located in the promoter region of HOXA4. E3 SUMO-protein ligase helping SUMO1 conjugation to its coregulators NAB1 and NAB2, whose sumoylation down-regulates EGR2 own transcriptional activity.

Joseph L.J., Proc. Natl. Acad. Sci. U.S.A. 85:7164-7168(1988).

Warner L.E., Nat. Genet. 18:382-384(1998).

Bechtel S., BMC Genomics 8:399-399(2007).

Aliases: AT591 antibody, CMT1D antibody, CMT4E antibody, DKFZp686J1957 antibody, E3 SUMO-protein ligase EGR2 antibody, Early growth response 2 antibody, Early growth response protein 2 antibody, EGR-2 antibody, egr2 antibody, EGR2_HUMAN antibody, FLJ14547 antibody, KROX 20 Drosophila homolog antibody, Krox 20 homolog Drosophila antibody, KROX-20, Drosophila, homolog (early growth response-2) antibody, KROX20 antibody, Krox20 protein antibody, Zinc finger protein Krox-20 antibody

UniProt: [P11161](#)

Application Details

Application Notes: WB:1:500-1:3000,

Restrictions: For Research Use only

Handling

Format: Liquid

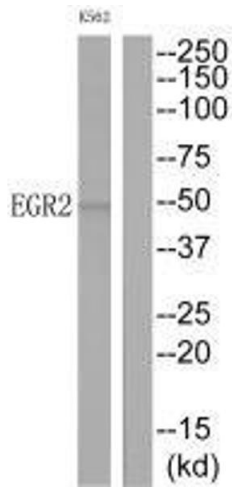
Buffer: Rabbit IgG in phosphate buffered saline (without Mg²⁺ and Ca²⁺), pH 7.4, 150 mM NaCl, 0.02 % sodium azide and 50 % glycerol.

Preservative: Sodium azide

Precaution of Use: This product contains Sodium azide: a POISONOUS AND HAZARDOUS SUBSTANCE which should be handled by trained staff only.

Storage: -20 °C,-80 °C

Storage Comment: Upon receipt, store at -20°C or -80°C. Avoid repeated freeze.



Western Blotting

Image 1. Western blot analysis of extracts from K562 cells, using EGR2 antibody.