

Datasheet for ABIN7180186  
**anti-IFI6 antibody (C-Term)**[Go to Product page](#)

## 1 Image

## Overview

Quantity:	100 µL
Target:	IFI6
Binding Specificity:	C-Term
Reactivity:	Human
Host:	Rabbit
Clonality:	Polyclonal
Conjugate:	This IFI6 antibody is un-conjugated
Application:	Western Blotting (WB), ELISA

## Product Details

Immunogen:	Synthesized peptide derived from C-terminal of Human IFI6.
Isotype:	IgG
Cross-Reactivity:	Human
Purification:	The antibody was affinity-purified from rabbit antiserum by affinity-chromatography using epitope-specific immunogen.

## Target Details

Target:	IFI6
Alternative Name:	IFI6 ( <a href="#">IFI6 Products</a> )
Background:	Background: This gene was first identified as one of the many genes induced by interferon. The

## Target Details

encoded protein may play a critical role in the regulation of apoptosis. A minisatellite that consists of 26 repeats of a 12 nucleotide repeating element resembling the mammalian splice donor consensus sequence begins near the end of the second exon. Alternatively spliced transcript variants that encode different isoforms by using the two downstream repeat units as splice donor sites have been described.

Kelly J.M., EMBO J. 5:1601-1606(1986).

Turri M.G., Nucleic Acids Res. 23:1854-1861(1995).

Kalnine N., Submitted (MAY-2003) to the EMBL/GenBank/DDBJ databases.

Aliases: Ifi-6-16 antibody, IFI6 antibody, IFI6\_HUMAN antibody, Interferon alpha-inducible protein 6 antibody, Interferon-induced protein 6-16 antibody

UniProt: [P09912](#)

## Application Details

Application Notes: WB:1:500-1:3000,

Restrictions: For Research Use only

## Handling

Format: Liquid

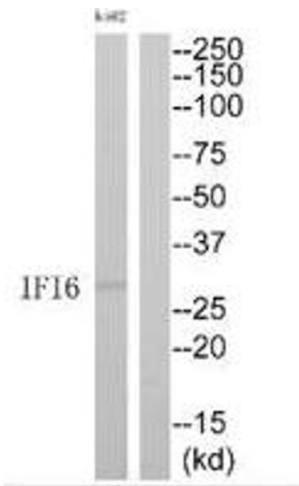
Buffer: Rabbit IgG in phosphate buffered saline (without Mg<sup>2+</sup> and Ca<sup>2+</sup>), pH 7.4, 150 mM NaCl, 0.02 % sodium azide and 50 % glycerol.

Preservative: Sodium azide

Precaution of Use: This product contains Sodium azide: a POISONOUS AND HAZARDOUS SUBSTANCE which should be handled by trained staff only.

Storage: -20 °C,-80 °C

Storage Comment: Upon receipt, store at -20°C or -80°C. Avoid repeated freeze.



Western Blotting

**Image 1.** Western blot analysis of extracts from K562 cells, using IFI6 antibody.