



[Go to Product page](#)

Datasheet for ABIN7180197  
**anti-MASTL antibody (C-Term)**

1 Image

### Overview

Quantity:	100 µL
Target:	MASTL
Binding Specificity:	C-Term
Reactivity:	Human
Host:	Rabbit
Clonality:	Polyclonal
Conjugate:	This MASTL antibody is un-conjugated
Application:	Western Blotting (WB), ELISA

### Product Details

Immunogen:	Synthesized peptide derived from C-terminal of Human MASTL.
Isotype:	IgG
Cross-Reactivity:	Human, Mouse
Purification:	The antibody was affinity-purified from rabbit antiserum by affinity-chromatography using epitope-specific immunogen.

### Target Details

Target:	MASTL
Alternative Name:	MASTL ( <a href="#">MASTL Products</a> )
Background:	Background: Serine/threonine kinase that plays a key role in M phase by acting as a regulator of

## Target Details

---

mitosis entry and maintenance. Acts by promoting the inactivation of protein phosphatase 2A (PP2A) during M phase: does not directly inhibit PP2A but acts by mediating phosphorylation and subsequent activation of ARPP19 and ENSA at 'Ser-62' and 'Ser-67', respectively. ARPP19 and ENSA are phosphatase inhibitors that specifically inhibit the PPP2R2D (PR55-delta) subunit of PP2A. Inactivation of PP2A during M phase is essential to keep cyclin-B1-CDK1 activity high. Following DNA damage, it is also involved in checkpoint recovery by being inhibited. Phosphorylates histone protein in vitro, however such activity is unsure in vivo. May be involved in megakaryocyte differentiation.

Ota T., Nat. Genet. 36:40-45(2004).

Deloukas P., Nature 429:375-381(2004).

Beausoleil S.A., Nat. Biotechnol. 24:1285-1292(2006).

Aliases: 2700091H24Rik antibody, C88295 antibody, FLJ14813 antibody, GREATWALL antibody, Greatwall protein kinase antibody, GW antibody, GWL antibody, GWL\_HUMAN antibody, hGWL antibody, MAST-L antibody, Mastl antibody, MGC117975 antibody, Microtubule associated serine/threonine kinase like antibody, Microtubule-associated serine/threonine-protein kinase-like antibody, RP11 85G18.2 antibody, Serine/threonine-protein kinase greatwall antibody, THC2 antibody

---

UniProt: [Q96GX5](#)

## Application Details

---

Application Notes: WB:1:500-1:3000,

Restrictions: For Research Use only

## Handling

---

Format: Liquid

Buffer: Rabbit IgG in phosphate buffered saline (without Mg<sup>2+</sup> and Ca<sup>2+</sup>), pH 7.4, 150 mM NaCl, 0.02 % sodium azide and 50 % glycerol.

Preservative: Sodium azide

Precaution of Use: This product contains Sodium azide: a POISONOUS AND HAZARDOUS SUBSTANCE which should be handled by trained staff only.

Storage: -20 °C,-80 °C

---

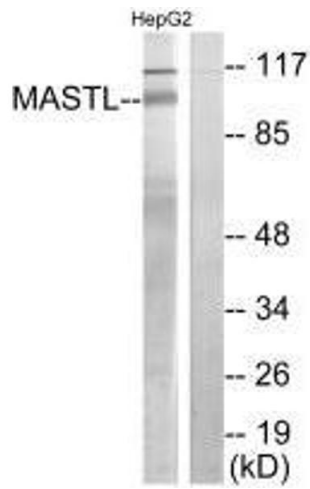
## Handling

---

Storage Comment: Upon receipt, store at -20°C or -80°C. Avoid repeated freeze.

## Images

---



### Western Blotting

**Image 1.** Western blot analysis of extracts from HepG2 cells, using MASTL antibody.