

Datasheet for ABIN7180199
anti-MBD3 antibody (C-Term)[Go to Product page](#)

1 Image

Overview

Quantity:	100 µL
Target:	MBD3
Binding Specificity:	C-Term
Reactivity:	Human
Host:	Rabbit
Clonality:	Polyclonal
Conjugate:	This MBD3 antibody is un-conjugated
Application:	Western Blotting (WB), ELISA

Product Details

Immunogen:	Synthesized peptide derived from C-terminal of Human MBD3.
Isotype:	IgG
Cross-Reactivity:	Human, Mouse
Purification:	The antibody was affinity-purified from rabbit antiserum by affinity-chromatography using epitope-specific immunogen.

Target Details

Target:	MBD3
Alternative Name:	MBD3 (MBD3 Products)
Background:	Background: Acts as transcriptional repressor and plays a role in gene silencing. Does not bind

Target Details

to DNA by itself (. Binds to DNA with a preference for sites containing methylated CpG dinucleotides (in vitro). Binds to a lesser degree DNA containing unmethylated CpG dinucleotides (). Recruits histone deacetylases and DNA methyltransferases.

Hendrich B., Mol. Cell. Biol. 18:6538-6547(1998).

Grimwood J., Nature 428:529-535(2004).

Tatematsu K., Genes Cells 5:677-688(2000).

Aliases: AI181826 antibody, AU019209 antibody, MBD 3 antibody, Mbd3 antibody, MBD3: methyl CpG binding domain protein 3 antibody, MBD3_HUMAN antibody, Methyl CpG binding domain protein 3 antibody, Methyl CpG binding protein MBD3 antibody, Methyl-CpG-binding domain protein 3 antibody, Methyl-CpG-binding protein MBD3 antibody

UniProt: [O95983](#)

Pathways: [Chromatin Binding](#)

Application Details

Application Notes: WB:1:500-1:3000,

Restrictions: For Research Use only

Handling

Format: Liquid

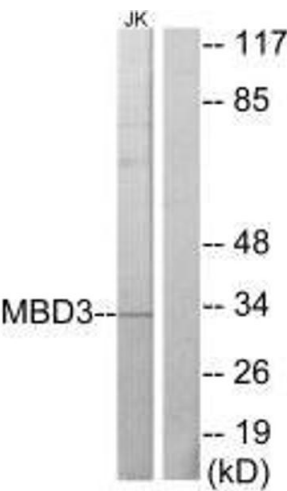
Buffer: Rabbit IgG in phosphate buffered saline (without Mg²⁺ and Ca²⁺), pH 7.4, 150 mM NaCl, 0.02 % sodium azide and 50 % glycerol.

Preservative: Sodium azide

Precaution of Use: This product contains Sodium azide: a POISONOUS AND HAZARDOUS SUBSTANCE which should be handled by trained staff only.

Storage: -20 °C, -80 °C

Storage Comment: Upon receipt, store at -20°C or -80°C. Avoid repeated freeze.



Western Blotting

Image 1. Western blot analysis of extracts from Jurkat cells, using MBD3 antibody.