



[Go to Product page](#)

Datasheet for ABIN7180201
anti-MIA antibody (C-Term)

1 Image

Overview

Quantity:	100 µL
Target:	MIA
Binding Specificity:	C-Term
Reactivity:	Human
Host:	Rabbit
Clonality:	Polyclonal
Conjugate:	This MIA antibody is un-conjugated
Application:	ELISA, Immunohistochemistry (IHC)

Product Details

Immunogen:	Synthesized peptide derived from C-terminal of Human MIA.
Isotype:	IgG
Cross-Reactivity:	Human, Mouse
Purification:	The antibody was affinity-purified from rabbit antiserum by affinity-chromatography using epitope-specific immunogen.

Target Details

Target:	MIA
Alternative Name:	MIA (MIA Products)
Background:	Background: Elicits growth inhibition on melanoma cells in vitro as well as some other

Target Details

neuroectodermal tumors, including gliomas.

Blesch A., Cancer Res. 54:5695-5701(1994).

Bosserhoff.,J. Biol. Chem. 271:490-495(1996).

Aliases: Cartilage derived retinoic acid sensitive protein antibody, CD RAP antibody, CDRAP antibody, Melanoma derived growth regulatory protein precursor antibody, Melanoma inhibitory activity protein antibody, Melanoma-derived growth regulatory protein antibody, Mia antibody, MIA_HUMAN antibody

UniProt: [Q16674](#)

Application Details

Application Notes: IHC:1:50-1:100,

Restrictions: For Research Use only

Handling

Format: Liquid

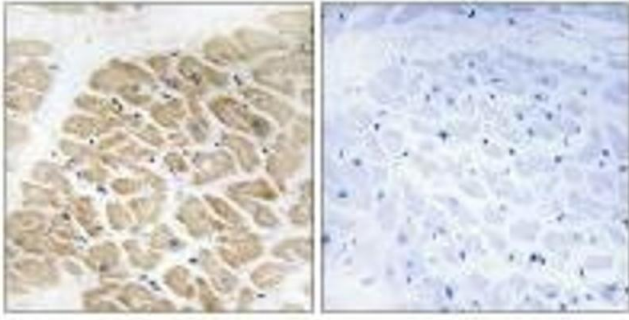
Buffer: Rabbit IgG in phosphate buffered saline (without Mg²⁺ and Ca²⁺), pH 7.4, 150 mM NaCl, 0.02 % sodium azide and 50 % glycerol.

Preservative: Sodium azide

Precaution of Use: This product contains Sodium azide: a POISONOUS AND HAZARDOUS SUBSTANCE which should be handled by trained staff only.

Storage: -20 °C,-80 °C

Storage Comment: Upon receipt, store at -20°C or -80°C. Avoid repeated freeze.



Immunohistochemistry

Image 1. Immunohistochemistry analysis of paraffin-embedded human heart tissue using MIA antibody.