



[Go to Product page](#)

Datasheet for ABIN7180202
anti-xpr1 antibody (C-Term)

1 Image

Overview

Quantity:	100 µL
Target:	xpr1
Binding Specificity:	C-Term
Reactivity:	Human
Host:	Rabbit
Clonality:	Polyclonal
Conjugate:	This xpr1 antibody is un-conjugated
Application:	ELISA, Western Blotting (WB)

Product Details

Immunogen:	Synthesized peptide derived from C-terminal of Human MIC1.
Isotype:	IgG
Cross-Reactivity:	Human
Purification:	The antibody was affinity-purified from rabbit antiserum by affinity-chromatography using epitope-specific immunogen.

Target Details

Target:	xpr1
Alternative Name:	RMC1 (xpr1 Products)
Background:	Background: This gene encodes a colon cancer associated protein.

Target Details

Ota T., Nat. Genet. 36:40-45(2004).

The MGC Project Team, Genome Res. 14:2121-2127(2004).

Linnebacher M., Submitted (APR-1999) to the EMBL/GenBank/DDBJ databases.

Aliases: C18orf8 antibody, Chromosome 18 open reading frame 8 antibody, Colon cancer associated protein Mic1 antibody, Colon cancer-associated protein Mic1 antibody, HsT2591 antibody, Mic-1 antibody, MIC1 antibody, MIC1_HUMAN antibody, Uncharacterized protein C18orf8 antibody

UniProt: [Q96DM3](#)

Application Details

Application Notes: WB:1:500-1:3000,

Restrictions: For Research Use only

Handling

Format: Liquid

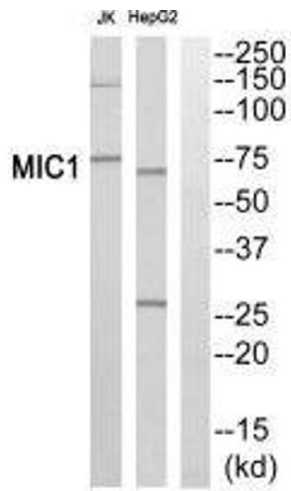
Buffer: Rabbit IgG in phosphate buffered saline (without Mg²⁺ and Ca²⁺), pH 7.4, 150 mM NaCl, 0.02 % sodium azide and 50 % glycerol.

Preservative: Sodium azide

Precaution of Use: This product contains Sodium azide: a POISONOUS AND HAZARDOUS SUBSTANCE which should be handled by trained staff only.

Storage: -20 °C,-80 °C

Storage Comment: Upon receipt, store at -20°C or -80°C. Avoid repeated freeze.



Western Blotting

Image 1. Western blot analysis of extracts from Jurkat cells and HepG2 cells, using MIC1 antibody.