

Datasheet for ABIN7180215  
**anti-NOLC1 antibody (C-Term)**[Go to Product page](#)

## 1 Image

## Overview

Quantity:	100 µL
Target:	NOLC1
Binding Specificity:	C-Term
Reactivity:	Human
Host:	Rabbit
Clonality:	Polyclonal
Conjugate:	This NOLC1 antibody is un-conjugated
Application:	Western Blotting (WB), ELISA

## Product Details

Immunogen:	Synthesized peptide derived from C-terminal of Human NOLC1.
Isotype:	IgG
Cross-Reactivity:	Human, Mouse, Rat
Purification:	The antibody was affinity-purified from rabbit antiserum by affinity-chromatography using epitope-specific immunogen.

## Target Details

Target:	NOLC1
Alternative Name:	NOLC1 ( <a href="#">NOLC1 Products</a> )
Background:	Background: Related to nucleogenesis, may play a role in the maintenance of the fundamental

## Target Details

structure of the fibrillar center and dense fibrillar component in the nucleolus. It has intrinsic GTPase and ATPase activities. May play an important role in transcription catalyzed by RNA polymerase I.

Pai C.-Y., J. Cell Sci. 108:1911-1920(1995).

Ying Z.L., Submitted (NOV-2004) to the EMBL/GenBank/DDBJ databases.

Deloukas P., Nature 429:375-381(2004).

Aliases: 140 kDa nucleolar phosphoprotein antibody, HCV NS5A trans regulated protein 13 antibody, HCV NS5A transactivated protein 13 antibody, HCV NS5A-transactivated protein 13 antibody, Hepatitis C virus NS5A transactivated protein 13 antibody, Hepatitis C virus NS5A-transactivated protein 13 antibody, KIAA0035 antibody, NOLC 1 antibody, NOLC1 antibody, NOLC1\_HUMAN antibody, NOPP 130 antibody, NOPP 140 antibody, NOPP130 antibody, Nopp140 antibody, NS5ATP13 antibody, Nucleolar 130 kDa protein antibody, Nucleolar and coiled body phosphoprotein 1 antibody, Nucleolar and coiled body phosphoprotein 1 antibody, Nucleolar and coiled-body phosphoprotein 1 antibody, Nucleolar phosphoprotein p130 antibody, Nucleolar protein p130 antibody, P130 antibody

UniProt: [Q14978](#)

Pathways: [Regulation of G-Protein Coupled Receptor Protein Signaling](#)

## Application Details

Application Notes: WB:1:500-1:3000,

Restrictions: For Research Use only

## Handling

Format: Liquid

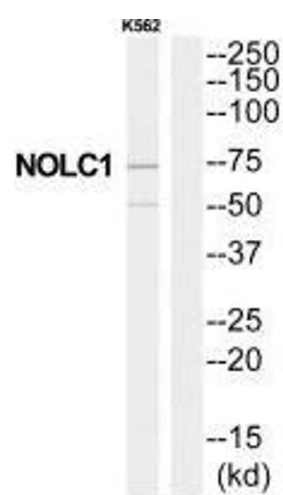
Buffer: Rabbit IgG in phosphate buffered saline (without Mg<sup>2+</sup> and Ca<sup>2+</sup>), pH 7.4, 150 mM NaCl, 0.02 % sodium azide and 50 % glycerol.

Preservative: Sodium azide

Precaution of Use: This product contains Sodium azide: a POISONOUS AND HAZARDOUS SUBSTANCE which should be handled by trained staff only.

Storage: -20 °C,-80 °C

Storage Comment: Upon receipt, store at -20°C or -80°C. Avoid repeated freeze.



Western Blotting

**Image 1.** Western blot analysis of extracts from K562 cells, using NOLC1 antibody.