



[Go to Product page](#)

Datasheet for ABIN7180218
anti-NUB1 antibody (C-Term)

3 Images

Overview

Quantity:	100 µL
Target:	NUB1
Binding Specificity:	C-Term
Reactivity:	Human
Host:	Rabbit
Clonality:	Polyclonal
Conjugate:	This NUB1 antibody is un-conjugated
Application:	Western Blotting (WB), Immunohistochemistry (IHC), ELISA

Product Details

Immunogen:	Synthesized peptide derived from C-terminal of Human NYREN18.
Isotype:	IgG
Cross-Reactivity:	Human, Mouse
Purification:	The antibody was affinity-purified from rabbit antiserum by affinity-chromatography using epitope-specific immunogen.

Target Details

Target:	NUB1
Alternative Name:	NUB1 (NUB1 Products)
Background:	Background: Specific down-regulator of the NEDD8 conjugation system. Recruits NEDD8, UBD,

Target Details

and their conjugates to the proteasome for degradation. Isoform 1 promotes the degradation of NEDD8 more efficiently than isoform 2.

Sarah M. Mense, Toxicol. Sci., Sep 2006, 93: 125 - 135.

Gunter Schmidtke, J. Biol. Chem., Jul 2006, 281: 20045 - 20054.s

Kunikazu Tanji, Am. J. Pathol., Aug 2006, 169: 553 - 565.

Miguel Ramalho-Santos, Science, Oct 2002, 298: 597.

Aliases: BS4 antibody, NEDD8 μLtimebuster 1 antibody, Negative regulator of ubiquitin like proteins 1 antibody, Negative regulator of ubiquitin-like proteins 1 antibody, NUB1 antibody, NUB1_HUMAN antibody, NUB1L antibody, NY REN 18 antibody, NYREN18 antibody, Renal carcinoma antigen NY-REN-18 antibody

UniProt: [Q9Y5A7](#)

Application Details

Application Notes: WB:1:500-1:3000, IHC:1:50-1:100,

Restrictions: For Research Use only

Handling

Format: Liquid

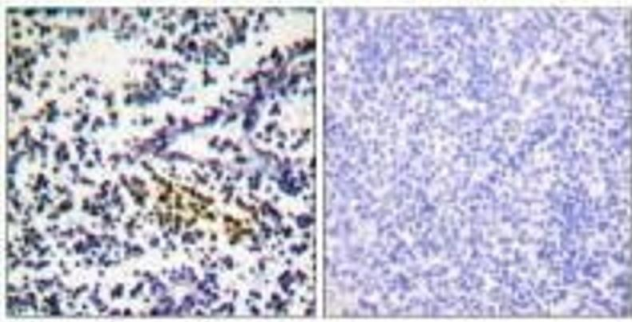
Buffer: Rabbit IgG in phosphate buffered saline (without Mg²⁺ and Ca²⁺), pH 7.4, 150 mM NaCl, 0.02 % sodium azide and 50 % glycerol.

Preservative: Sodium azide

Precaution of Use: This product contains Sodium azide: a POISONOUS AND HAZARDOUS SUBSTANCE which should be handled by trained staff only.

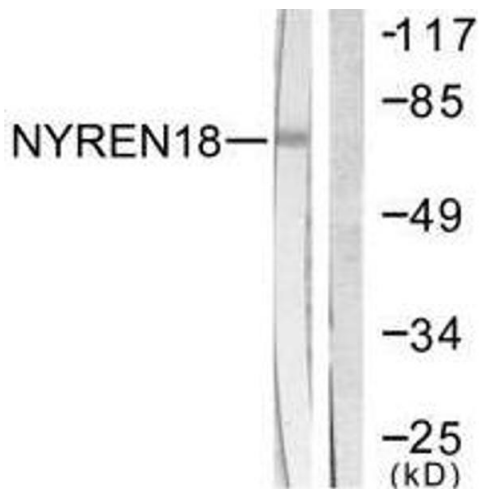
Storage: -20 °C, -80 °C

Storage Comment: Upon receipt, store at -20°C or -80°C. Avoid repeated freeze.



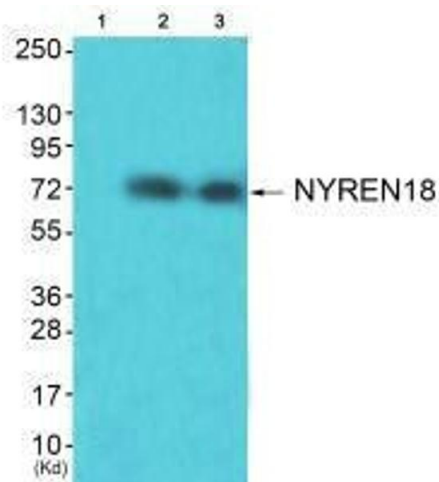
Immunohistochemistry

Image 1. Immunohistochemistry analysis of paraffin-embedded human tonsil tissue using NYREN18 antibody.



Western Blotting

Image 2. Western blot analysis of extracts from COS7 cells, using NYREN18 antibody.



Western Blotting

Image 3. Western blot analysis of extracts from HuvEc cells (Lane 2) and JK cells (Lane 3), using NYREN18 antibody. The lane on the left is treated with synthesized peptide.