

Datasheet for ABIN7180219

anti-ORCTL-2/SLC22A18 antibody (C-Term)[Go to Product page](#)**1** Image

Overview

| | |
|----------------------|---|
| Quantity: | 100 µL |
| Target: | ORCTL-2/SLC22A18 (SLC22A18) |
| Binding Specificity: | C-Term |
| Reactivity: | Human |
| Host: | Rabbit |
| Clonality: | Polyclonal |
| Conjugate: | This ORCTL-2/SLC22A18 antibody is un-conjugated |
| Application: | Western Blotting (WB), ELISA |

Product Details

| | |
|-------------------|---|
| Immunogen: | Synthesized peptide derived from C-terminal of Human ORCTL-2. |
| Isotype: | IgG |
| Cross-Reactivity: | Human |
| Purification: | The antibody was affinity-purified from rabbit antiserum by affinity-chromatography using epitope-specific immunogen. |

Target Details

| | |
|-------------------|---|
| Target: | ORCTL-2/SLC22A18 (SLC22A18) |
| Alternative Name: | SLC22A18 (SLC22A18 Products) |
| Background: | Background: May act as a transporter of organic cations based on a proton efflux antiport |

Target Details

mechanism. May play a role in the transport of chloroquine and quinidine-related compounds in kidney.

Lee M.P., Cancer Res. 58:4155-4159(1998).

Morisaki H., DNA Res. 5:235-240(1998).

Cooper P.R., Genomics 49:38-51(1998).

Aliases: SLC22A18 antibody, BWR1A antibody, BWSCR1A antibody, HET antibody, IMPT1 antibody, ITM antibody, ORCTL2 antibody, SLC22A1L antibody, TSSC5 antibody, Solute carrier family 22 member 18 antibody, Beckwith-Wiedemann syndrome chromosomal region 1 candidate gene A protein antibody, Efflux transporter-like protein antibody, Imprinted multi-membrane-spanning polyspecific transporter-related protein 1 antibody, Organic cation transporter-like protein 2 antibody, ORCTL-2 antibody, Solute carrier family 22 member 1-like antibody, Tumor-suppressing STF cDNA 5 protein antibody, Tumor-suppressing subchromosomal transferable fragment candidate gene 5 protein antibody, p45-Beckwith-Wiedemann region 1 A antibody, p45-BWR1A antibody

UniProt: [Q96BI1](#)

Application Details

Application Notes: WB:1:500-1:3000,

Restrictions: For Research Use only

Handling

Format: Liquid

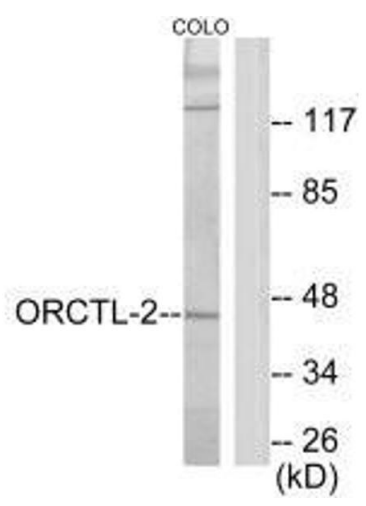
Buffer: Rabbit IgG in phosphate buffered saline (without Mg²⁺ and Ca²⁺), pH 7.4, 150 mM NaCl, 0.02 % sodium azide and 50 % glycerol.

Preservative: Sodium azide

Precaution of Use: This product contains Sodium azide: a POISONOUS AND HAZARDOUS SUBSTANCE which should be handled by trained staff only.

Storage: -20 °C, -80 °C

Storage Comment: Upon receipt, store at -20°C or -80°C. Avoid repeated freeze.



Western Blotting

Image 1. Western blot analysis of extracts from COLO205 cells, using ORCTL-2 antibody.