



[Go to Product page](#)

Datasheet for ABIN7180224
anti-PRIM1 antibody (C-Term)

1 Image

Overview

Quantity:	100 µL
Target:	PRIM1
Binding Specificity:	C-Term
Reactivity:	Human
Host:	Rabbit
Clonality:	Polyclonal
Conjugate:	This PRIM1 antibody is un-conjugated
Application:	Western Blotting (WB), ELISA

Product Details

Immunogen:	Synthesized peptide derived from C-terminal of Human PRIM1.
Isotype:	IgG
Cross-Reactivity:	Human, Mouse, Rat
Purification:	The antibody was affinity-purified from rabbit antiserum by affinity-chromatography using epitope-specific immunogen.

Target Details

Target:	PRIM1
Alternative Name:	PRIM1 (PRIM1 Products)
Background:	Background: DNA primase is the polymerase that synthesizes small RNA primers for the

Target Details

Okazaki fragments made during discontinuous DNA replication.

Stadlbauer F., Eur. J. Biochem. 222:781-793(1994).

The MGC Project Team, Genome Res. 14:2121-2127(2004).

Cloutier S., Genomics 43:398-401(1997).

Aliases: AI324982 antibody, DNA primase 49 kDa subunit antibody, DNA primase small subunit antibody, MGC107288 antibody, MGC109113 antibody, p49 antibody, PRI1_HUMAN antibody, PRIM1 antibody

UniProt: [P49642](#)

Pathways: [Telomere Maintenance](#), [Mitotic G1-G1/S Phases](#), [DNA Replication](#), [Synthesis of DNA](#), [SARS-CoV-2 Protein Interactome](#)

Application Details

Application Notes: WB:1:500-1:3000,

Restrictions: For Research Use only

Handling

Format: Liquid

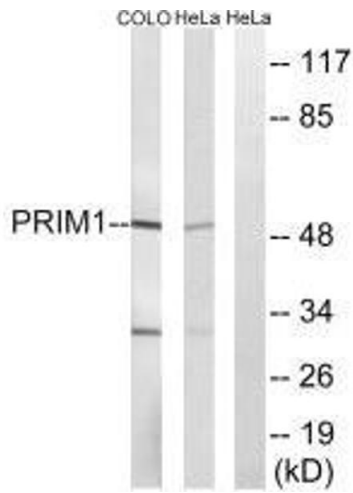
Buffer: Rabbit IgG in phosphate buffered saline (without Mg²⁺ and Ca²⁺), pH 7.4, 150 mM NaCl, 0.02 % sodium azide and 50 % glycerol.

Preservative: Sodium azide

Precaution of Use: This product contains Sodium azide: a POISONOUS AND HAZARDOUS SUBSTANCE which should be handled by trained staff only.

Storage: -20 °C,-80 °C

Storage Comment: Upon receipt, store at -20°C or -80°C. Avoid repeated freeze.



Western Blotting

Image 1. Western blot analysis of extracts from HepG2 cells, using PRIM1 antibody.