

Datasheet for ABIN7180229  
**anti-RCAN1 antibody (C-Term)**[Go to Product page](#)

## 1 Image

## Overview

Quantity:	100 µL
Target:	RCAN1
Binding Specificity:	C-Term
Reactivity:	Human
Host:	Rabbit
Clonality:	Polyclonal
Conjugate:	This RCAN1 antibody is un-conjugated
Application:	Western Blotting (WB), ELISA

## Product Details

Immunogen:	Synthesized peptide derived from C-terminal of Human RCAN1.
Isotype:	IgG
Cross-Reactivity:	Human, Mouse
Purification:	The antibody was affinity-purified from rabbit antiserum by affinity-chromatography using epitope-specific immunogen.

## Target Details

Target:	RCAN1
Alternative Name:	RCAN1 ( <a href="#">RCAN1 Products</a> )
Background:	Background: Inhibits calcineurin-dependent transcriptional responses by binding to the catalytic

## Target Details

domain of calcineurin A. Could play a role during central nervous system development.

Fuentes J.-J., Hum. Mol. Genet. 4:1935-1944(1995).

Fuentes J.-J., Genomics 44:358-361(1997).

Genesca L., Biochem. J. 374:567-575(2003)

Aliases: Adapt 78 antibody, Adapt78 antibody, Calcipressin 1 antibody, Calcipressin-1 antibody, Calcium and oxidant inducible mRNA antibody, CSP 1 antibody, CSP1 antibody, Down syndrome candidate region 1 antibody, Down syndrome critical region gene 1 antibody, Down syndrome critical region protein 1 antibody, DSC 1 antibody, DSC1 antibody, DSCR 1 antibody, DSCR1 antibody, MCIP 1 antibody, MCIP1 antibody, Modulatory calcineurin interacting protein 1 antibody, Myocyte enriched calcineurin interacting protein 1 antibody, Myocyte-enriched calcineurin-interacting protein 1 antibody, Near DSCR proline rich protein antibody, RCAN1 antibody, RCAN1\_HUMAN antibody, RCN 1 antibody, RCN1 antibody, Regulator of calcineurin 1 antibody

UniProt: [P53805](#)

Pathways: [Regulation of Muscle Cell Differentiation](#), [Skeletal Muscle Fiber Development](#)

## Application Details

Application Notes: WB:1:500-1:3000,

Restrictions: For Research Use only

## Handling

Format: Liquid

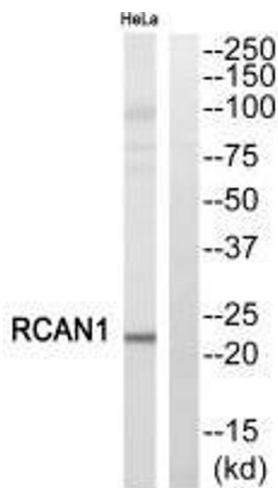
Buffer: Rabbit IgG in phosphate buffered saline (without Mg<sup>2+</sup> and Ca<sup>2+</sup>), pH 7.4, 150 mM NaCl, 0.02 % sodium azide and 50 % glycerol.

Preservative: Sodium azide

Precaution of Use: This product contains Sodium azide: a POISONOUS AND HAZARDOUS SUBSTANCE which should be handled by trained staff only.

Storage: -20 °C, -80 °C

Storage Comment: Upon receipt, store at -20°C or -80°C. Avoid repeated freeze.



Western Blotting

**Image 1.** Western blot analysis of extracts from HeLa cells, using RCAN1 antibody.