

Datasheet for ABIN7180232
anti-URI1 antibody (C-Term)[Go to Product page](#)

2 Images

Overview

Quantity:	100 µL
Target:	URI1
Binding Specificity:	C-Term
Reactivity:	Human
Host:	Rabbit
Clonality:	Polyclonal
Conjugate:	This URI1 antibody is un-conjugated
Application:	Western Blotting (WB), ELISA, Immunohistochemistry (IHC)

Product Details

Immunogen:	Synthesized peptide derived from C-terminal of Human RMP.
Isotype:	IgG
Cross-Reactivity:	Human
Purification:	The antibody was affinity-purified from rabbit antiserum by affinity-chromatography using epitope-specific immunogen.

Target Details

Target:	URI1
Alternative Name:	URI1 (URI1 Products)
Background:	Background: Involved in gene transcription regulation. Acts as a transcriptional repressor in

Target Details

concert with the corepressor UXT to regulate androgen receptor (AR) transcription. May act as a tumor suppressor to repress AR-mediated gene transcription and to inhibit anchorage-independent growth in prostate cancer cells. Required for cell survival in ovarian cancer cells. Together with UXT, associates with chromatin to the NKX3-1 promoter region. Antagonizes transcriptional modulation via hepatitis B virus X protein. Plays a central role in maintaining S6K1 signaling and BAD phosphorylation under normal growth conditions thereby protecting cells from potential deleterious effects of sustained S6K1 signaling. The URI1-PPP1CC complex acts as a central component of a negative feedback mechanism that counteracts excessive S6K1 survival signaling to BAD in response to growth factors. Mediates inhibition of PPP1CC phosphatase activity in mitochondria. Coordinates the regulation of nutrient-sensitive gene expression availability in a mTOR-dependent manner. Seems to be a scaffolding protein able to assemble a prefoldin-like complex that contains PFDs and proteins with roles in transcription and ubiquitination.

Van Leuven F., Genomics 54:511-520(1998).

Ota T., Nat. Genet. 36:40-45(2004).

Grimwood J., Nature 428:529-535(2004).

Aliases: C19orf2 antibody, Chromosome 19 open reading frame 2 antibody, NNX3 antibody, NNX3 protein antibody, PPP1R19 antibody, Protein NNX3 antibody, Protein phosphatase 1 regulatory subunit 19 antibody, RMP antibody, RMP_HUMAN antibody, RNA polymerase II subunit 5 mediating protein antibody, RNA polymerase II subunit 5-mediating protein antibody, RPB5 mediating protein antibody, RPB5-mediating protein antibody, Unconventional prefoldin RPB5 interactor 1 antibody, Unconventional prefoldin RPB5 interactor antibody, URI antibody, URI1 antibody, URI1, prefoldin-like chaperone antibody

UniProt: [O94763](#)

Application Details

Application Notes: WB:1:500-1:3000, IHC:1:50-1:100,

Restrictions: For Research Use only

Handling

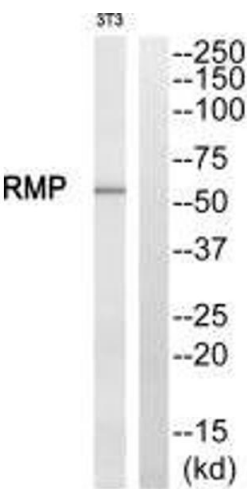
Format: Liquid

Buffer: Rabbit IgG in phosphate buffered saline (without Mg²⁺ and Ca²⁺), pH 7.4, 150 mM NaCl,

Handling

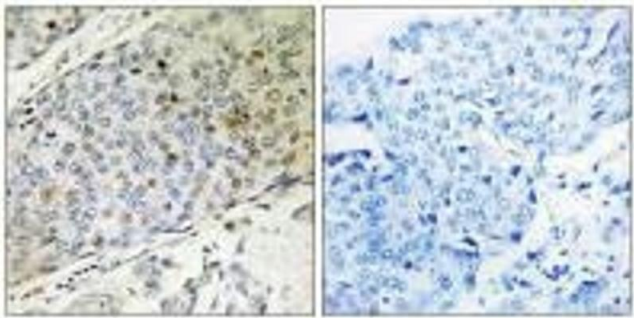
	0.02 % sodium azide and 50 % glycerol.
Preservative:	Sodium azide
Precaution of Use:	This product contains Sodium azide: a POISONOUS AND HAZARDOUS SUBSTANCE which should be handled by trained staff only.
Storage:	-20 °C,-80 °C
Storage Comment:	Upon receipt, store at -20°C or -80°C. Avoid repeated freeze.

Images



Western Blotting

Image 1. Western blot analysis of extracts from NIH/3T3 cells, using RMP antibody.



Immunohistochemistry

Image 2. Immunohistochemistry analysis of paraffin-embedded human breast carcinoma tissue, using RMP antibody.