

Datasheet for ABIN7180234  
**anti-RPL27A antibody (C-Term)**



[Go to Product page](#)

2 Images

### Overview

Quantity:	100 µL
Target:	RPL27A
Binding Specificity:	C-Term
Reactivity:	Human
Host:	Rabbit
Clonality:	Polyclonal
Conjugate:	This RPL27A antibody is un-conjugated
Application:	Western Blotting (WB), ELISA, Immunofluorescence (IF)

### Product Details

Immunogen:	Synthesized peptide derived from C-terminal of Human RPL27A.
Isotype:	IgG
Cross-Reactivity:	Human, Mouse, Rat
Purification:	The antibody was affinity-purified from rabbit antiserum by affinity-chromatography using epitope-specific immunogen.

### Target Details

Target:	RPL27A
Alternative Name:	RPL27A ( <a href="#">RPL27A Products</a> )
Background:	Background: Ribosomes, the organelles that catalyze protein synthesis, consist of a small 40S

## Target Details

---

subunit and a large 60S subunit. Together these subunits are composed of 4 RNA species and approximately 80 structurally distinct proteins. This gene encodes a ribosomal protein that is a component of the 60S subunit. The protein belongs to the L15P family of ribosomal proteins. It is located in the cytoplasm. Variable expression of this gene in colorectal cancers compared to adjacent normal tissues has been observed, although no correlation between the level of expression and the severity of the disease has been found. As is typical for genes encoding ribosomal proteins, multiple processed pseudogenes derived from this gene are dispersed through the genome.

Frigerio J.-M., *Biochim. Biophys. Acta* 1262:64-68(1995).

Kusuda J., *Cytogenet. Cell Genet.* 85:248-251(1999).

The MGC Project Team, *Genome Res.* 14:2121-2127(2004).

Aliases: 60S ribosomal protein L27a antibody, FLJ43464 antibody, ribosomal protein L27a antibody, RL27A\_HUMAN antibody, rpl27a antibody

---

UniProt: [P46776](#)

## Application Details

---

Application Notes: WB:1:500-1:3000, IF:1:100-1:500,

Restrictions: For Research Use only

## Handling

---

Format: Liquid

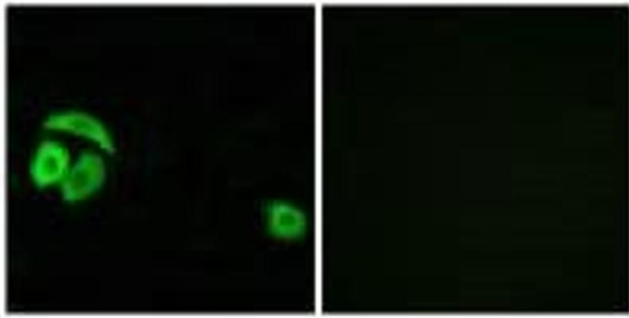
Buffer: Rabbit IgG in phosphate buffered saline (without Mg<sup>2+</sup> and Ca<sup>2+</sup>), pH 7.4, 150 mM NaCl, 0.02 % sodium azide and 50 % glycerol.

Preservative: Sodium azide

Precaution of Use: This product contains Sodium azide: a POISONOUS AND HAZARDOUS SUBSTANCE which should be handled by trained staff only.

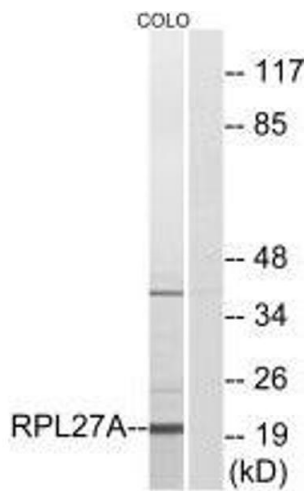
Storage: -20 °C, -80 °C

Storage Comment: Upon receipt, store at -20°C or -80°C. Avoid repeated freeze.



### Immunofluorescence

**Image 1.** Immunofluorescence analysis of A549 cells, using RPL27A antibody.



### Western Blotting

**Image 2.** Western blot analysis of extracts from COLO cells, using RPL27A antibody.