

Datasheet for ABIN7180237  
**anti-RPS4Y1 antibody (C-Term)**[Go to Product page](#)

## 2 Images

## Overview

Quantity:	100 µL
Target:	RPS4Y1
Binding Specificity:	C-Term
Reactivity:	Human
Host:	Rabbit
Clonality:	Polyclonal
Conjugate:	This RPS4Y1 antibody is un-conjugated
Application:	Western Blotting (WB), ELISA, Immunofluorescence (IF)

## Product Details

Immunogen:	Synthesized peptide derived from C-terminal of Human RPS4Y1.
Isotype:	IgG
Cross-Reactivity:	Human
Purification:	The antibody was affinity-purified from rabbit antiserum by affinity-chromatography using epitope-specific immunogen.

## Target Details

Target:	RPS4Y1
Alternative Name:	RPS4Y1 ( <a href="#">RPS4Y1 Products</a> )
Background:	Background: Cytoplasmic ribosomes, organelles that catalyze protein synthesis, consist of a

## Target Details

small 40S subunit and a large 60S subunit. Together these subunits are composed of 4 RNA species and approximately 80 structurally distinct proteins. This gene encodes ribosomal protein S4, a component of the 40S subunit. Ribosomal protein S4 is the only ribosomal protein known to be encoded by more than one gene, namely this gene and ribosomal protein S4, X-linked (RPS4X). The 2 isoforms encoded by these genes are not identical, but are functionally equivalent. Ribosomal protein S4 belongs to the S4E family of ribosomal proteins. It has been suggested that haploinsufficiency of the ribosomal protein S4 genes plays a role in Turner syndrome, however, this hypothesis is controversial. As is typical for genes encoding ribosomal proteins, there are multiple processed pseudogenes of this gene dispersed through the genome.

Fisher E.M.C., Cell 63:1205-1218(1990).

Zuo L., Submitted (JAN-1998) to the EMBL/GenBank/DDBJ databases.

Zhang C., Submitted (DEC-1998) to the EMBL/GenBank/DDBJ databases.

Aliases: 40S ribosomal protein S4 antibody, 40S ribosomal protein S4, Y antibody, 40S ribosomal protein S4, Y isoform 1 antibody, MGC119100 antibody, MGC5070 antibody, ribosomal protein S4, Y linked 1 antibody, ribosomal protein S4, Y linked antibody, ribosomal protein S4, Y-linked 1 antibody, ribosomal protein S4Y antibody, RPS4Y antibody, RPS4Y1 antibody, RS4Y1\_HUMAN antibody, S4 antibody, Y isoform 1 antibody

UniProt: [P22090](#)

## Application Details

Application Notes: WB:1:500-1:3000, IF:1:100-1:500,

Restrictions: For Research Use only

## Handling

Format: Liquid

Buffer: Rabbit IgG in phosphate buffered saline (without Mg<sup>2+</sup> and Ca<sup>2+</sup>), pH 7.4, 150 mM NaCl, 0.02 % sodium azide and 50 % glycerol.

Preservative: Sodium azide

Precaution of Use: This product contains Sodium azide: a POISONOUS AND HAZARDOUS SUBSTANCE which should be handled by trained staff only.

Storage: -20 °C,-80 °C

Handling

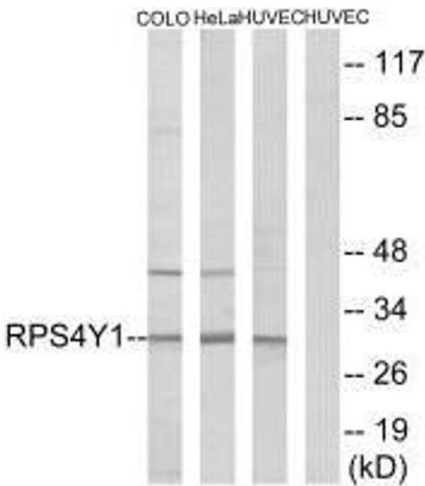
Storage Comment: Upon receipt, store at -20°C or -80°C. Avoid repeated freeze.

Images



Immunofluorescence

**Image 1.** Immunofluorescence analysis of HuvEc cells, using RPS4Y1 antibody.



Western Blotting

**Image 2.** Western blot analysis of extracts from COLO cells, HeLa cells and HUVEC cells, using RPS4Y1 antibody.