



[Go to Product page](#)

Datasheet for ABIN7180244

## anti-SH2D5 antibody (C-Term)

### 1 Image

#### Overview

Quantity:	100 µL
Target:	SH2D5
Binding Specificity:	C-Term
Reactivity:	Human
Host:	Rabbit
Clonality:	Polyclonal
Conjugate:	This SH2D5 antibody is un-conjugated
Application:	Western Blotting (WB), ELISA

#### Product Details

Immunogen:	Synthesized peptide derived from C-terminal of Human SH2D5.
Isotype:	IgG
Cross-Reactivity:	Human
Purification:	The antibody was affinity-purified from rabbit antiserum by affinity-chromatography using epitope-specific immunogen.

#### Target Details

Target:	SH2D5
Alternative Name:	SH2D5 ( <a href="#">SH2D5 Products</a> )
Background:	Background: 2 isoforms of the human protein are produced by alternative splicing.

## Target Details

---

Ota T., Nat. Genet. 36:40-45(2004).

Gregory S.G., Nature 441:315-321(2006).

Gauci S., Anal. Chem. 81:4493-4501(2009).

Aliases: FLJ41242 antibody, FLJ41847 antibody, FLJ42879 antibody, SH2 domain containing 5 antibody, SH2 domain-containing protein 5 antibody, SH2D5 antibody, SH2D5\_HUMAN antibody

---

UniProt: [Q6ZV89](#)

## Application Details

---

Application Notes: WB:1:500-1:3000,

Restrictions: For Research Use only

## Handling

---

Format: Liquid

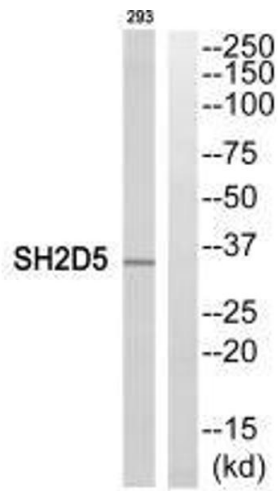
Buffer: Rabbit IgG in phosphate buffered saline (without Mg<sup>2+</sup> and Ca<sup>2+</sup>), pH 7.4, 150 mM NaCl, 0.02 % sodium azide and 50 % glycerol.

Preservative: Sodium azide

Precaution of Use: This product contains Sodium azide: a POISONOUS AND HAZARDOUS SUBSTANCE which should be handled by trained staff only.

Storage: -20 °C,-80 °C

Storage Comment: Upon receipt, store at -20°C or -80°C. Avoid repeated freeze.



### Western Blotting

**Image 1.** Western blot analysis of extracts from 293 cells, using SH2D5 antibody.