

Datasheet for ABIN7180245
anti-SH3RF3 antibody (C-Term)



[Go to Product page](#)

1 Image

Overview

Quantity:	100 µL
Target:	SH3RF3
Binding Specificity:	C-Term
Reactivity:	Human
Host:	Rabbit
Clonality:	Polyclonal
Conjugate:	This SH3RF3 antibody is un-conjugated
Application:	Western Blotting (WB), ELISA

Product Details

Immunogen:	Synthesized peptide derived from C-terminal of Human SH3RF3.
Isotype:	IgG
Cross-Reactivity:	Human, Mouse
Purification:	The antibody was affinity-purified from rabbit antiserum by affinity-chromatography using epitope-specific immunogen.

Target Details

Target:	SH3RF3
Alternative Name:	SH3RF3 (SH3RF3 Products)
Background:	Background: Belongs to the SH3RF family.

Target Details

Hillier L.W., Nature 434:724-731(2005).

Kaerkaeinen S., EMBO Rep. 7:186-191(2006).

Jikuya H., DNA Res. 10:49-57(2003).

Aliases: Plenty of SH3s 2 antibody, POSH2 antibody, SH3 domain-containing RING finger protein 3 antibody, SH3 multiple domains protein 4 antibody, SH3MD4 antibody, SH3R3_HUMAN antibody, SH3RF3 antibody

UniProt: [Q8TEJ3](#)

Application Details

Application Notes: WB:1:500-1:3000,

Restrictions: For Research Use only

Handling

Format: Liquid

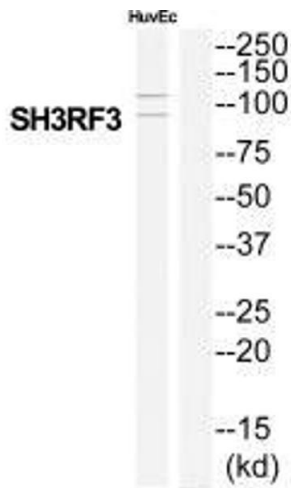
Buffer: Rabbit IgG in phosphate buffered saline (without Mg²⁺ and Ca²⁺), pH 7.4, 150 mM NaCl, 0.02 % sodium azide and 50 % glycerol.

Preservative: Sodium azide

Precaution of Use: This product contains Sodium azide: a POISONOUS AND HAZARDOUS SUBSTANCE which should be handled by trained staff only.

Storage: -20 °C,-80 °C

Storage Comment: Upon receipt, store at -20°C or -80°C. Avoid repeated freeze.



Western Blotting

Image 1. Western blot analysis of extracts from HuvEc cells, using SH3RF3 antibody.