



[Go to Product page](#)

Datasheet for ABIN7180246  
**anti-SHB antibody (C-Term)**

1 Image

### Overview

Quantity:	100 µL
Target:	SHB
Binding Specificity:	C-Term
Reactivity:	Human
Host:	Rabbit
Clonality:	Polyclonal
Conjugate:	This SHB antibody is un-conjugated
Application:	Western Blotting (WB), ELISA

### Product Details

Immunogen:	Synthesized peptide derived from C-terminal of Human SHB.
Isotype:	IgG
Cross-Reactivity:	Human
Purification:	The antibody was affinity-purified from rabbit antiserum by affinity-chromatography using epitope-specific immunogen.

### Target Details

Target:	SHB
Alternative Name:	SHB ( <a href="#">SHB Products</a> )
Background:	Background: Adapter protein which regulates several signal transduction cascades by linking

## Target Details

---

activated receptors to downstream signaling components. May play a role in angiogenesis by regulating FGFR1, VEGFR2 and PDGFR signaling. May also play a role in T-cell antigen receptor/TCR signaling, interleukin-2 signaling, apoptosis and neuronal cells differentiation by mediating basic-FGF and NGF-induced signaling cascades. May also regulate IRS1 and IRS2 signaling in insulin-producing cells.

Welsh M., Oncogene 9:19-27(1994).

Humphray S.J., Nature 429:369-374(2004).

Mural R.J., Submitted (SEP-2005) to the EMBL/GenBank/DDBJ databases.

Aliases: bA3J10.2 antibody, OTTHUMP00000021397 antibody, RP11 3J10.8 antibody, RP113J10.8 antibody, SH2 domain containing adapter protein B antibody, SH2 domain-containing adapter protein B antibody, SHB (Src homology 2 domain containing) adaptor protein B antibody, SHB adaptor protein (a Src homology 2 protein) antibody, SHB adaptor protein antibody, Shb antibody, SHB\_HUMAN antibody, Src homology 2 domain containing adaptor protein B antibody, Src homology 2 protein antibody

---

UniProt: [Q15464](#)

## Application Details

---

Application Notes: WB:1:500-1:3000,

Restrictions: For Research Use only

## Handling

---

Format: Liquid

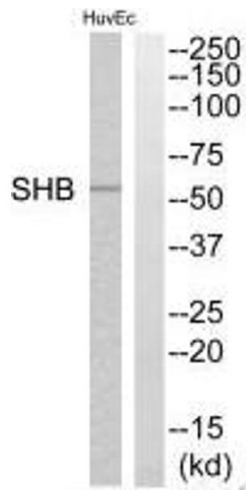
Buffer: Rabbit IgG in phosphate buffered saline (without Mg<sup>2+</sup> and Ca<sup>2+</sup>), pH 7.4, 150 mM NaCl, 0.02 % sodium azide and 50 % glycerol.

Preservative: Sodium azide

Precaution of Use: This product contains Sodium azide: a POISONOUS AND HAZARDOUS SUBSTANCE which should be handled by trained staff only.

Storage: -20 °C,-80 °C

Storage Comment: Upon receipt, store at -20°C or -80°C. Avoid repeated freeze.



### Western Blotting

**Image 1.** Western blot analysis of extracts from HuvEc cells, using SHB antibody.