



Datasheet for ABIN7180250  
**anti-SKIL antibody (C-Term)**



[Go to Product page](#)

1 Image

Overview

Quantity:	100 µL
Target:	SKIL
Binding Specificity:	C-Term
Reactivity:	Human
Host:	Rabbit
Clonality:	Polyclonal
Conjugate:	This SKIL antibody is un-conjugated
Application:	Western Blotting (WB), ELISA

Product Details

Immunogen:	Synthesized peptide derived from C-terminal of Human SKIL.
Isotype:	IgG
Cross-Reactivity:	Human, Mouse
Purification:	The antibody was affinity-purified from rabbit antiserum by affinity-chromatography using epitope-specific immunogen.

Target Details

Target:	SKIL
Alternative Name:	SKIL ( <a href="#">SKIL Products</a> )
Background:	Background: May have regulatory role in cell division or differentiation in response to

## Target Details

---

extracellular signals.

Nomura N., Nucleic Acids Res. 17:5489-5500(1989).

Pearson-White S.H., Nucleic Acids Res. 25:2930-2937(1997).

Pearson-White S., Nucleic Acids Res. 21:4632-4638(1993).

Aliases: OTTHUMP00000213557 antibody, OTTHUMP00000213591 antibody, OTTHUMP00000213592 antibody, OTTHUMP00000213595 antibody, SKI like antibody, SKI like oncogene antibody, Ski like protein antibody, SKI like proto oncogene antibody, Ski related oncogene antibody, Ski related oncogene snoN antibody, Ski related protein antibody, Ski-like protein antibody, Ski-related oncogene antibody, Ski-related protein antibody, SKIL antibody, SKIL\_HUMAN antibody, SNO antibody, SnoA antibody, SnoI antibody, SnoN antibody

---

UniProt: [P12757](#)

---

Pathways: [Positive Regulation of Response to DNA Damage Stimulus](#)

## Application Details

---

Application Notes: WB:1:500-1:3000,

---

Restrictions: For Research Use only

## Handling

---

Format: Liquid

---

Buffer: Rabbit IgG in phosphate buffered saline (without Mg<sup>2+</sup> and Ca<sup>2+</sup>), pH 7.4, 150 mM NaCl, 0.02 % sodium azide and 50 % glycerol.

---

Preservative: Sodium azide

---

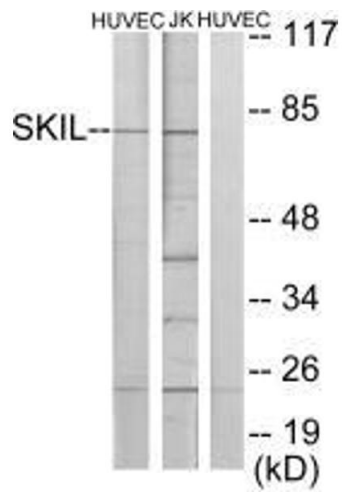
Precaution of Use: This product contains Sodium azide: a POISONOUS AND HAZARDOUS SUBSTANCE which should be handled by trained staff only.

---

Storage: -20 °C,-80 °C

---

Storage Comment: Upon receipt, store at -20°C or -80°C. Avoid repeated freeze.



### Western Blotting

**Image 1.** Western blot analysis of extracts from HUVEC cells and Jurkat cells, using SKIL antibody.