

Datasheet for ABIN7180267
anti-TIMP4 antibody (C-Term)

3 Images

[Go to Product page](#)

Overview

Quantity:	100 µL
Target:	TIMP4
Binding Specificity:	C-Term
Reactivity:	Human
Host:	Rabbit
Clonality:	Polyclonal
Conjugate:	This TIMP4 antibody is un-conjugated
Application:	Western Blotting (WB), Immunohistochemistry (IHC), ELISA

Product Details

Immunogen:	Synthesized peptide derived from C-terminal of Human TIMP4.
Isotype:	IgG
Cross-Reactivity:	Human, Mouse, Rat
Purification:	The antibody was affinity-purified from rabbit antiserum by affinity-chromatography using epitope-specific immunogen.

Target Details

Target:	TIMP4
Alternative Name:	TIMP4 (TIMP4 Products)
Background:	Background: Complexes with metalloproteinases (such as collagenases) and irreversibly

Target Details

inactivates them by binding to their catalytic zinc cofactor. Known to act on MMP-1, MMP-2, MMP-3, MMP-7 and MMP-9.

Jennifer Adjodha, AACR Meeting Abstracts, Apr 2005, 2005: 699.

Kiyoshi Asada, AACR Meeting Abstracts, Apr 2005, 2005: 202.

Elaine K Green, J. Med. Genet., Aug 2000, 37: 581.

Jennifer Adjodha, AACR Meeting Abstracts, Apr 2006, 2006: 1028.

Aliases: Metalloproteinase inhibitor 4 antibody, TIMP 4 antibody, TIMP metalloproteinase inhibitor 4 antibody, TIMP-4 antibody, Timp4 antibody, TIMP4_HUMAN antibody, Tissue inhibitor of metalloproteinase 4 antibody, Tissue inhibitor of metalloproteinases 4 antibody

UniProt: [Q99727](#)

Application Details

Application Notes: WB:1:500-1:3000, IHC:1:50-1:100,

Restrictions: For Research Use only

Handling

Format: Liquid

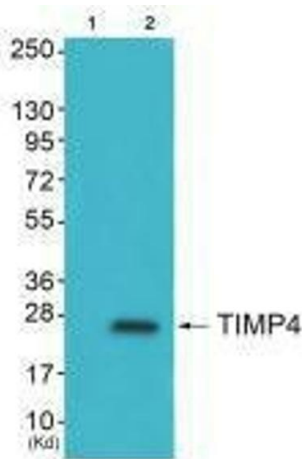
Buffer: Rabbit IgG in phosphate buffered saline (without Mg²⁺ and Ca²⁺), pH 7.4, 150 mM NaCl, 0.02 % sodium azide and 50 % glycerol.

Preservative: Sodium azide

Precaution of Use: This product contains Sodium azide: a POISONOUS AND HAZARDOUS SUBSTANCE which should be handled by trained staff only.

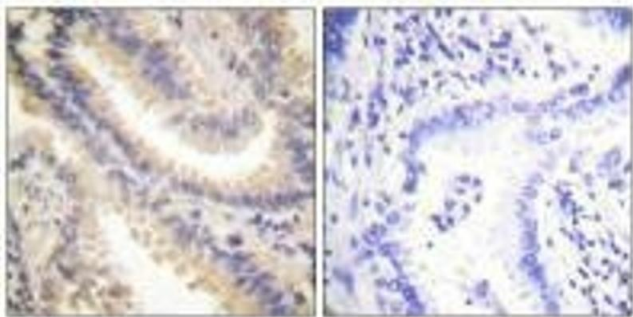
Storage: -20 °C, -80 °C

Storage Comment: Upon receipt, store at -20°C or -80°C. Avoid repeated freeze.



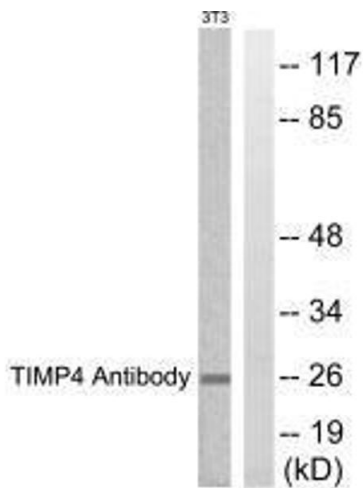
Western Blotting

Image 1. Western blot analysis of extracts from HepG2 cells (Lane 2), using TIMP4 antibody. The lane on the left is treated with synthesized peptide.



Immunohistochemistry

Image 2. Immunohistochemistry analysis of paraffin-embedded human lung carcinoma tissue using TIMP4 antibody.



Western Blotting

Image 3. Western blot analysis of extracts from NIH/3T3 cells, using TIMP4 antibody.