



[Go to Product page](#)

Datasheet for ABIN7180278
anti-UBA2 antibody (C-Term)

2 Images

Overview

Quantity:	100 µL
Target:	UBA2
Binding Specificity:	C-Term
Reactivity:	Human
Host:	Rabbit
Clonality:	Polyclonal
Conjugate:	This UBA2 antibody is un-conjugated
Application:	Western Blotting (WB), ELISA, Immunohistochemistry (IHC)

Product Details

Immunogen:	Synthesized peptide derived from C-terminal of Human Uba2.
Isotype:	IgG
Cross-Reactivity:	Human
Purification:	The antibody was affinity-purified from rabbit antiserum by affinity-chromatography using epitope-specific immunogen.

Target Details

Target:	UBA2
Alternative Name:	UBA2 (UBA2 Products)
Background:	Background: The heterodimer acts as a E1 ligase for SUMO1, SUMO2, SUMO3, and probably

Target Details

SUMO4. It mediates ATP-dependent activation of SUMO proteins followed by formation of a thioester bond between a SUMO protein and a conserved active site cysteine residue on UBA2/SAE2.

Mark H. L. Lambermon, Mol. Cell. Biol., Jun 2002, 22: 4346 - 4357.

Kyoung-Seok Ryu, J. Biol. Chem., Sep 2003, 278: 36621 - 36627.

R. Jrgen Dohmen, J. Biol. Chem., Jul 1995, 270: 18099.

Yoshiaki Azuma, FASEB J, Jun 2001, 10.1096.

Aliases: Anthracycline associated resistance ARX antibody, Anthracycline-associated resistance ARX antibody, ARX antibody, FLJ13058 antibody, HRIHFB2115 antibody, SAE 2 antibody, SAE2 antibody, SAE2_HUMAN antibody, SUMO 1 activating enzyme subunit 2 antibody, SUMO activating enzyme subunit 2 antibody, SUMO-activating enzyme subunit 2 antibody, UBA2 antibody, UBA2 ubiquitin activating enzyme E1 homolog antibody, Ubiquitin like 1 activating enzyme E1B antibody, Ubiquitin like modifier activating enzyme 2 antibody, Ubiquitin-like 1-activating enzyme E1B antibody, UBLE1B antibody

UniProt: [Q9UBT2](#)

Application Details

Application Notes: WB:1:500-1:3000, IHC:1:50-1:100,

Restrictions: For Research Use only

Handling

Format: Liquid

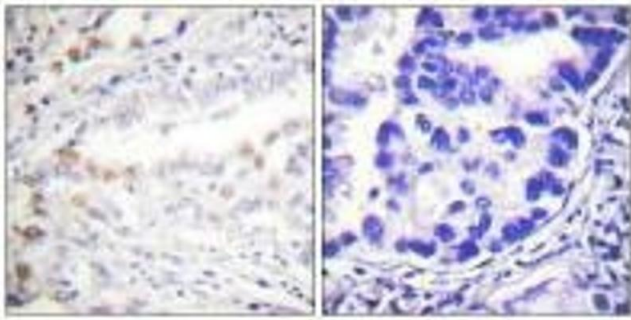
Buffer: Rabbit IgG in phosphate buffered saline (without Mg²⁺ and Ca²⁺), pH 7.4, 150 mM NaCl, 0.02 % sodium azide and 50 % glycerol.

Preservative: Sodium azide

Precaution of Use: This product contains Sodium azide: a POISONOUS AND HAZARDOUS SUBSTANCE which should be handled by trained staff only.

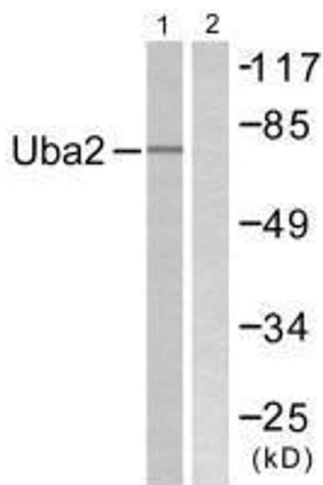
Storage: -20 °C,-80 °C

Storage Comment: Upon receipt, store at -20°C or -80°C. Avoid repeated freeze.



Immunohistochemistry

Image 1. Immunohistochemistry analysis of paraffin-embedded human lung carcinoma tissue using Uba2 antibody.



Western Blotting

Image 2. Western blot analysis of extracts from 293 cells, treated with UV (5 mins), using Uba2 antibody.