



[Go to Product page](#)

Datasheet for ABIN7180285  
**anti-WIPF1 antibody (C-Term)**

1 Image

### Overview

Quantity:	100 µL
Target:	WIPF1
Binding Specificity:	C-Term
Reactivity:	Human
Host:	Rabbit
Clonality:	Polyclonal
Conjugate:	This WIPF1 antibody is un-conjugated
Application:	Western Blotting (WB), ELISA

### Product Details

Immunogen:	Synthesized peptide derived from C-terminal of Human WIPF1.
Isotype:	IgG
Cross-Reactivity:	Human
Purification:	The antibody was affinity-purified from rabbit antiserum by affinity-chromatography using epitope-specific immunogen.

### Target Details

Target:	WIPF1
Alternative Name:	WIPF1 ( <a href="#">WIPF1 Products</a> )
Background:	Background: Plays a role in the reorganization of the actin cytoskeleton. Contributes with NCK1

## Target Details

---

and GRB2 in the recruitment and activation of WASL. May participate in regulating the subcellular localization of WASL, resulting in the disassembly of stress fibers in favor of filopodia formation. Plays a role in the formation of cell ruffles By similarity. Plays an important role in the intracellular motility of vaccinia virus by functioning as an adapter for recruiting WASL to vaccinia virus.

Ramesh N., Proc. Natl. Acad. Sci. U.S.A. 94:14671-14676(1997).

Kreideweiss S., Submitted (JAN-1998) to the EMBL/GenBank/DDBJ databases.

Bechtel S., BMC Genomics 8:399-399(2007).

Aliases: WIPF1 antibody, WASPIP antibody, WIP antibody, WAS/WASL-interacting protein family member 1 antibody, Protein PRPL-2 antibody, Wiskott-Aldrich syndrome protein-interacting protein antibody, WASP-interacting protein antibody

---

UniProt: [O43516](#)

---

Pathways: [RTK Signaling](#)

## Application Details

---

Application Notes: WB:1:500-1:3000,

---

Restrictions: For Research Use only

## Handling

---

Format: Liquid

---

Buffer: Rabbit IgG in phosphate buffered saline (without Mg<sup>2+</sup> and Ca<sup>2+</sup>), pH 7.4, 150 mM NaCl, 0.02 % sodium azide and 50 % glycerol.

---

Preservative: Sodium azide

---

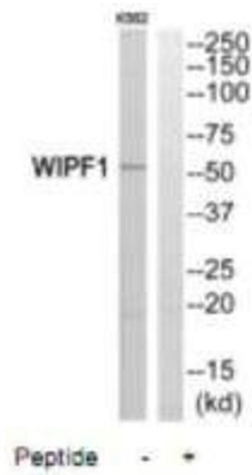
Precaution of Use: This product contains Sodium azide: a POISONOUS AND HAZARDOUS SUBSTANCE which should be handled by trained staff only.

---

Storage: -20 °C,-80 °C

---

Storage Comment: Upon receipt, store at -20°C or -80°C. Avoid repeated freeze.



### Western Blotting

**Image 1.** Western blot analysis of extracts from K562 cells, using WIPF1 antibody.