



[Go to Product page](#)

Datasheet for ABIN7180286  
**anti-WTAP antibody (C-Term)**

1 Image

Overview

Quantity:	100 µL
Target:	WTAP
Binding Specificity:	C-Term
Reactivity:	Human
Host:	Rabbit
Clonality:	Polyclonal
Conjugate:	This WTAP antibody is un-conjugated
Application:	Western Blotting (WB), ELISA

Product Details

Immunogen:	Synthesized peptide derived from C-terminal of Human WTAP.
Isotype:	IgG
Cross-Reactivity:	Human, Mouse
Purification:	The antibody was affinity-purified from rabbit antiserum by affinity-chromatography using epitope-specific immunogen.

Target Details

Target:	WTAP
Alternative Name:	WTAP ( <a href="#">WTAP Products</a> )
Background:	Background: Regulatory subunit of the WMM N6-methyltransferase complex, a multiprotein

## Target Details

---

complex that mediates N6-methyladenosine (m6A) methylation of some adenosine residues of some mRNAs and plays a role in the efficiency of mRNA splicing and processing and mRNA stability. Required for accumulation of METTL3 and METTL14 to nuclear speckle. Acts as a mRNA splicing regulator. Regulates G2/M cell-cycle transition by binding to the 3' UTR of CCNA2, which enhances its stability. Impairs WT1 DNA-binding ability and inhibits expression of WT1 target genes.

Ortega A., J. Biol. Chem. 278:3040-3047(2003).

Nagase T., DNA Res. 2:37-43(1995).

Mungall A.J., Nature 425:805-811(2003).

Aliases: DKFZp686F20131 antibody, Female-lethal(2)D homolog antibody, FL2D\_HUMAN antibody, hFL(2)D antibody, KIAA0105 antibody, MGC3925 antibody, Mum2 antibody, OTTHUMP00000017522 antibody, OTTHUMP00000017523 antibody, PNAS 132 antibody, PNAS-132 antibody, PNAS132 antibody, Pre mRNA splicing regulator WTAP antibody, Pre-mRNA-splicing regulator WTAP antibody, Putative pre mRNA splicing regulator female lethal 2D homolog antibody, Putative pre mRNA splicing regulator female lethal(2D) antibody, Putative pre-mRNA splicing regulator female lethal(2D) homolog antibody, putative pre-mRNA splicing regulator female-lethal(2D) antibody, Wilms tumor 1 associated protein antibody, Wilms tumor 1 associating protein antibody, Wilms tumor 1-associating protein antibody, Wilms' tumor 1 associating protein antibody, Wilms' tumour 1-associating protein antibody, WT1 associated protein antibody, WT1-associated protein antibody, WT1-associating protein antibody, wtap antibody

---

UniProt: [Q15007](#)

## Application Details

---

Application Notes: WB:1:500-1:3000,

Restrictions: For Research Use only

## Handling

---

Format: Liquid

Buffer: Rabbit IgG in phosphate buffered saline (without Mg<sup>2+</sup> and Ca<sup>2+</sup>), pH 7.4, 150 mM NaCl, 0.02 % sodium azide and 50 % glycerol.

Preservative: Sodium azide

---

## Handling

---

Precaution of Use: This product contains Sodium azide: a POISONOUS AND HAZARDOUS SUBSTANCE which should be handled by trained staff only.

---

Storage: -20 °C, -80 °C

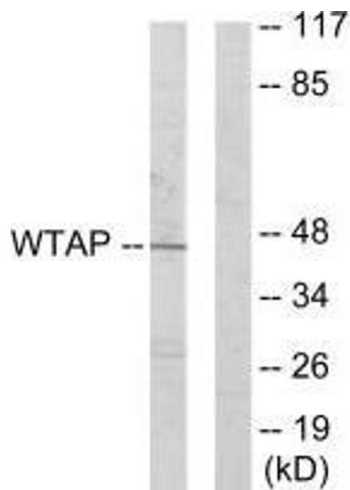
---

Storage Comment: Upon receipt, store at -20°C or -80°C. Avoid repeated freeze.

---

## Images

---



### Western Blotting

**Image 1.** Western blot analysis of extracts from HUVEC cells, using WTAP antibody.