

Datasheet for ABIN7180299
anti-Selectin E/CD62e antibody

3 Images

[Go to Product page](#)

Overview

Quantity:	100 µg
Target:	Selectin E/CD62e (SELE)
Reactivity:	Human
Host:	Rabbit
Clonality:	Polyclonal
Conjugate:	This Selectin E/CD62e antibody is un-conjugated
Application:	Western Blotting (WB), ELISA

Product Details

Immunogen:	Synthesized peptide derived from E-Selectin . at AA range: INTERNAL
Isotype:	IgG
Cross-Reactivity:	Human
Purification:	The antibody was affinity-purified from rabbit antiserum by affinity-chromatography using epitope-specific immunogen.

Target Details

Target:	Selectin E/CD62e (SELE)
Alternative Name:	SELE (SELE Products)
Background:	CD26E antibody, CD62 antigen-like family member E antibody, CD62E antibody, E selectin antibody, E-selectin antibody, ELAM antibody, ELAM-1 antibody, ELAM1 antibody, Endothelial adhesion molecule 1 antibody, Endothelial leukocyte adhesion molecule 1 antibody, ESEL

Target Details

antibody, LECAM2 antibody, Leukocyte-endothelial cell adhesion molecule 2 antibody, LYAM2_HUMAN antibody, Sele antibody, Selectin E antibody

UniProt: [P16581](#)

Pathways: [Thromboxane A2 Receptor Signaling](#)

Application Details

Application Notes: WB:1:500-2000, ELISA:1:10000-20000,

Restrictions: For Research Use only

Handling

Format: Liquid

Buffer: Liquid in PBS containing 50 % glycerol, 0.5 % BSA and 0.02 % sodium azide.

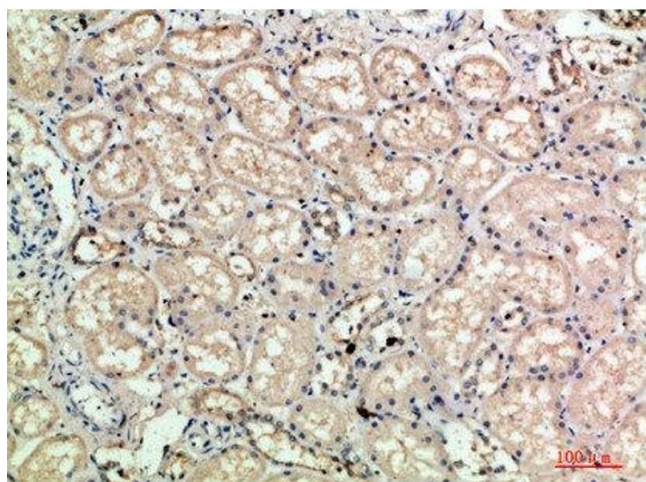
Preservative: Sodium azide

Precaution of Use: This product contains Sodium azide: a POISONOUS AND HAZARDOUS SUBSTANCE which should be handled by trained staff only.

Storage: -20 °C,-80 °C

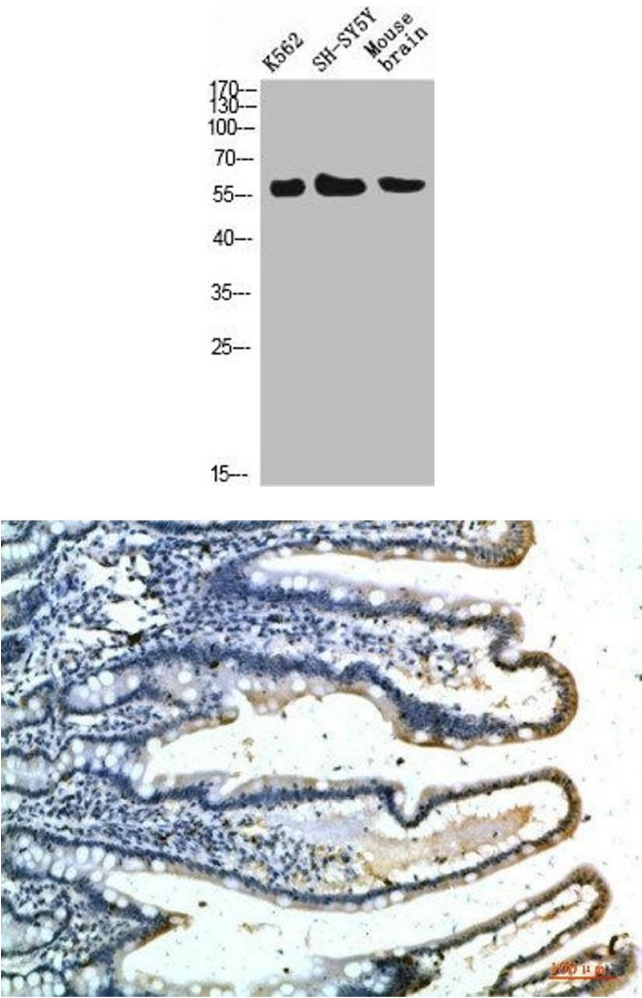
Storage Comment: Upon receipt, store at -20°C or -80°C. Avoid repeated freeze.

Images



Immunohistochemistry

Image 1. Immunohistochemical analysis of paraffin-embedded human-kidney, antibody was diluted at 1:200



Western Blotting

Image 2. Western Blot analysis of K562 SH-SY5Y mouse-brain cells using E-Selectin Polyclonal Antibody diluted at 1:500. Secondary antibody was diluted at 1:20000

Immunohistochemistry

Image 3. Immunohistochemical analysis of paraffin-embedded human-colon, antibody was diluted at 1:200