



[Go to Product page](#)

Datasheet for ABIN7180302
anti-FAM3D antibody (AA 121-170)

1 Image

Overview

Quantity:	100 µg
Target:	FAM3D
Binding Specificity:	AA 121-170
Reactivity:	Human
Host:	Rabbit
Clonality:	Polyclonal
Conjugate:	This FAM3D antibody is un-conjugated
Application:	Western Blotting (WB), ELISA

Product Details

Immunogen:	Synthesized peptide derived from FAM3D at AA range: 121-170
Isotype:	IgG
Cross-Reactivity:	Human
Purification:	The antibody was affinity-purified from rabbit antiserum by affinity-chromatography using epitope-specific immunogen.

Target Details

Target:	FAM3D
Alternative Name:	FAM3D (FAM3D Products)
Background:	FAM3D antibody, UNQ567/PRO1130Protein FAM3D antibody

Target Details

UniProt: [Q96BQ1](#)

Application Details

Application Notes: WB:1:500-2000, ELISA:1:10000-20000,

Restrictions: For Research Use only

Handling

Format: Liquid

Buffer: Liquid in PBS containing 50 % glycerol, 0.5 % BSA and 0.02 % sodium azide.

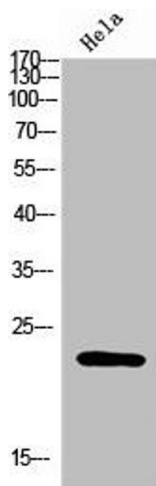
Preservative: Sodium azide

Precaution of Use: This product contains Sodium azide: a POISONOUS AND HAZARDOUS SUBSTANCE which should be handled by trained staff only.

Storage: -20 °C,-80 °C

Storage Comment: Upon receipt, store at -20°C or -80°C. Avoid repeated freeze.

Images



Western Blotting

Image 1. Western Blot analysis of HeLa cells using FAM3D Polyclonal Antibody diluted at 1:500. Secondary antibody was diluted at 1:20000