

Datasheet for ABIN7180447

**anti-Arc antibody****3** Images[Go to Product page](#)

## Overview

Quantity:	100 µL
Target:	Arc
Reactivity:	Human
Host:	Rabbit
Clonality:	Polyclonal
Conjugate:	This Arc antibody is un-conjugated
Application:	Western Blotting (WB), Immunohistochemistry (IHC), ELISA, Immunofluorescence (IF)

## Product Details

Immunogen:	Synthesized peptide derived from Human ARC.
Isotype:	IgG
Cross-Reactivity:	Human, Mouse
Purification:	The antibody was affinity-purified from rabbit antiserum by affinity-chromatography using epitope-specific immunogen.

## Target Details

Target:	Arc
Alternative Name:	ARC ( <a href="#">Arc Products</a> )
Background:	Background: This gene encodes an anti-apoptotic protein that has been shown to down-regulate the enzyme activities of caspase 2, caspase 8 and tumor protein p53. Multiple transcript variants encoding different isoforms have been found for this gene.

## Target Details

---

Victor Ram?z-Amaya, J. Neurosci., Feb 2005, 25: 1761 - 1768.

Young-Jae Nam, J. Biol. Chem., Feb 2007, 282: 5522 - 5528.

Daryoush Ekhterae, Circ. Res., Dec 1999, 85: 70.

Tsai-Kun Li, Cancer Res., Dec 2003, 63: 8400 - 8407

Aliases: Myp, NOL3, Nop30, Nucleolar protein 3, apoptosis repressor ARC

---

UniProt: [Q5TZN6](#)

## Application Details

---

Application Notes: WB:1:500-1:3000, IHC:1:50-1:100, IF:1:100-1:500,

Restrictions: For Research Use only

## Handling

---

Format: Liquid

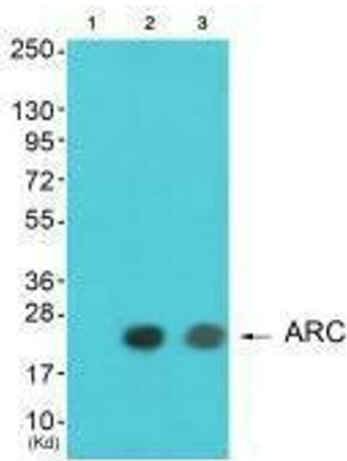
Buffer: Rabbit IgG in phosphate buffered saline (without Mg<sup>2+</sup> and Ca<sup>2+</sup>), pH 7.4, 150 mM NaCl, 0.02 % sodium azide and 50 % glycerol.

Preservative: Sodium azide

Precaution of Use: This product contains Sodium azide: a POISONOUS AND HAZARDOUS SUBSTANCE which should be handled by trained staff only.

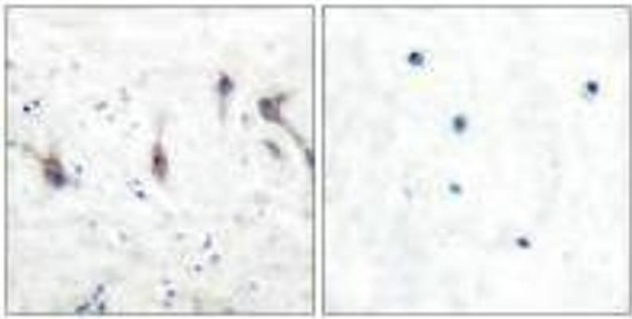
Storage: -20 °C,-80 °C

Storage Comment: Upon receipt, store at -20°C or -80°C. Avoid repeated freeze.



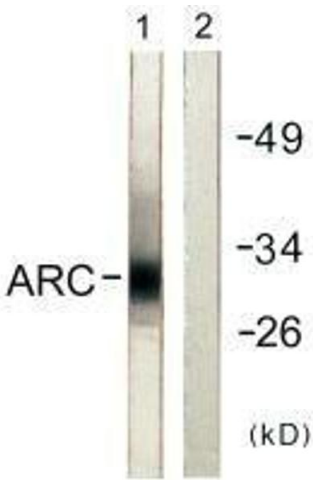
#### Western Blotting

**Image 1.** Western blot analysis of extracts from HeLa cells and A549 cells using ARC antibody. The lane on the left is treated with synthesized peptide.



#### Immunohistochemistry

**Image 2.** Immunohistochemical analysis of paraffin-embedded human brain tissue using ARC antibody.



#### Western Blotting

**Image 3.** Western blot analysis of extracts from HeLa cells, using ARC antibody.