

Datasheet for ABIN7180534
anti-BCL6 antibody (pSer333)[Go to Product page](#)

2 Images

Overview

| | |
|----------------------|-------------------------------------|
| Quantity: | 100 µg |
| Target: | BCL6 |
| Binding Specificity: | pSer333 |
| Reactivity: | Human |
| Host: | Rabbit |
| Clonality: | Polyclonal |
| Conjugate: | This BCL6 antibody is un-conjugated |
| Application: | Western Blotting (WB), ELISA |

Product Details

| | |
|-------------------|---|
| Immunogen: | Synthesized peptide derived from Human Bcl-6 around the phosphorylation site of S333. |
| Isotype: | IgG |
| Cross-Reactivity: | Human, Mouse, Rat |
| Purification: | The antibody was affinity-purified from rabbit antiserum by affinity-chromatography using epitope-specific immunogen. |

Target Details

| | |
|-------------------|---|
| Target: | BCL6 |
| Alternative Name: | BCL6 (BCL6 Products) |
| Background: | B cell CLL/lymphoma 6 antibody, B cell lymphoma 6 protein antibody, B-cell lymphoma 5 |

Target Details

protein antibody, B-cell lymphoma 6 protein antibody, BCL 5 antibody, Bcl 6 antibody, BCL-5 antibody, BCL-6 antibody, BCL5 antibody, BCL6 antibody, BCL6_HUMAN antibody, BCL6A antibody, cys his2 zinc finger transcription factor antibody, cys-his2 zinc finger transcription factor antibody, LAZ 3 antibody, LAZ 3 protein antibody, LAZ3 antibody, Lymphoma Associated Zinc Finger Gene On Chromosome 3 (LAZ3) antibody, Lymphoma associated zinc finger gene on chromosome 3 antibody, Protein LAZ-3 antibody, ZBTB 27 antibody, ZBTB27 antibody, Zinc finger and BTB domain containing protein 27 antibody, Zinc finger and BTB domain-containing protein 27 (ZBTB27) antibody, Zinc finger and BTB domain-containing protein 27 antibody, Zinc Finger Protein 51 (ZNF51) antibody, Zinc finger protein 51 antibody, zinc finger transcription factor BCL6S antibody, ZNF 51 antibody, ZNF51 antibody

UniProt: [P41182](#)

Pathways: [Chromatin Binding](#), [Regulation of Leukocyte Mediated Immunity](#), [Production of Molecular Mediator of Immune Response](#), [Protein targeting to Nucleus](#)

Application Details

Application Notes: WB:1:500-1:2000, ELISA:1:5000,

Restrictions: For Research Use only

Handling

Format: Liquid

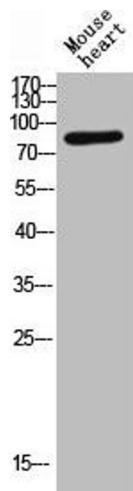
Buffer: Liquid in PBS containing 50 % glycerol, 0.5 % BSA and 0.02 % sodium azide.

Preservative: Sodium azide

Precaution of Use: This product contains Sodium azide: a POISONOUS AND HAZARDOUS SUBSTANCE which should be handled by trained staff only.

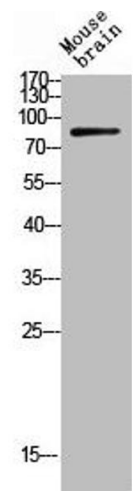
Storage: -20 °C,-80 °C

Storage Comment: Upon receipt, store at -20°C or -80°C. Avoid repeated freeze.



Western Blotting

Image 1. Western blot analysis of mouse-heart lysis using Phospho-Bcl-6 (S333) antibody.



Western Blotting

Image 2. Western Blot analysis of MOUSE-HEART cells using Phospho-Bcl-6 (S333) Polyclonal Antibody