



Datasheet for ABIN7180594
anti-c-FOS antibody (pSer362)



[Go to Product page](#)

2 Images

Overview

Quantity:	100 µg
Target:	c-FOS (c-Fos)
Binding Specificity:	pSer362
Reactivity:	Human
Host:	Rabbit
Clonality:	Polyclonal
Conjugate:	This c-FOS antibody is un-conjugated
Application:	Western Blotting (WB), ELISA, Immunohistochemistry (IHC)

Product Details

Immunogen:	Synthesized peptide derived from Human c-Fos around the phosphorylation site of S362.
Isotype:	IgG
Cross-Reactivity:	Human, Mouse, Rat
Purification:	The antibody was affinity-purified from rabbit antiserum by affinity-chromatography using epitope-specific immunogen.

Target Details

Target:	c-FOS (c-Fos)
Alternative Name:	FOS (c-Fos Products)
Background:	Activator protein 1 antibody, AP 1 antibody, C FOS antibody, Cellular oncogene c fos antibody,

Target Details

Cellular oncogene fos antibody, FBJ murine osteosarcoma viral (v fos) oncogene homolog (oncogene FOS) antibody, FBJ murine osteosarcoma viral oncogene homolog antibody, FBJ murine osteosarcoma viral v fos oncogene homolog antibody, FBJ Osteosarcoma Virus antibody, FOS antibody, FOS protein antibody, FOS_HUMAN antibody, G0 G1 switch regulatory protein 7 antibody, G0/G1 switch regulatory protein 7 antibody, G0S7 antibody, Oncogene FOS antibody, p55 antibody, proto oncogene c Fos antibody, Proto oncogene protein c fos antibody, Proto-oncogene c-Fos antibody, v fos FBJ murine osteosarcoma viral oncogene homolog antibody

UniProt: [P01100](#)

Pathways: [S100 Proteins](#)

Application Details

Application Notes: WB:1:500-1:2000, IHC:1:100-1:300, ELISA:1:10000,

Restrictions: For Research Use only

Handling

Format: Liquid

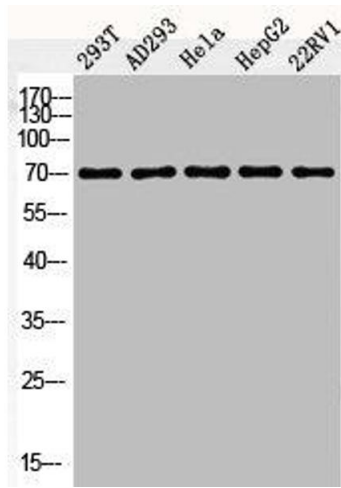
Buffer: Liquid in PBS containing 50 % glycerol, 0.5 % BSA and 0.02 % sodium azide.

Preservative: Sodium azide

Precaution of Use: This product contains Sodium azide: a POISONOUS AND HAZARDOUS SUBSTANCE which should be handled by trained staff only.

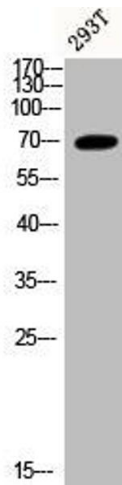
Storage: -20 °C,-80 °C

Storage Comment: Upon receipt, store at -20°C or -80°C. Avoid repeated freeze.



Western Blotting

Image 1. Western Blot analysis of 293T AD293 HELA HepG2 22RV1 cells using Phospho-c-Fos (S362) Polyclonal Antibody



Western Blotting

Image 2. Western Blot analysis of 293T cells using Phospho-c-Fos (S362) Polyclonal Antibody