

Datasheet for ABIN7180818
anti-CHEK1 antibody (pSer301)



[Go to Product page](#)

1 Image

Overview

Quantity:	100 µg
Target:	CHEK1
Binding Specificity:	pSer301
Reactivity:	Human
Host:	Rabbit
Clonality:	Polyclonal
Conjugate:	This CHEK1 antibody is un-conjugated
Application:	Western Blotting (WB), ELISA, Immunofluorescence (IF)

Product Details

Immunogen:	Synthesized peptide derived from Human Chk1 around the phosphorylation site of S301.
Isotype:	IgG
Cross-Reactivity:	Human, Mouse, Rat
Purification:	The antibody was affinity-purified from rabbit antiserum by affinity-chromatography using epitope-specific immunogen.

Target Details

Target:	CHEK1
Alternative Name:	CHEK1 (CHEK1 Products)
Background:	C85740 antibody, Cell cycle checkpoint kinase antibody, Checkpoint , S. pombe, homolog of, 1

Target Details

antibody, Checkpoint kinase 1 antibody, Checkpoint kinase 1 homolog (S. pombe) antibody, CHEK 1 antibody, Chk1 antibody, Chk 1 antibody, Chk1 antibody, CHK1 checkpoint homolog (S. pombe) antibody, CHK1_HUMAN antibody, EC 2.7.11.1 antibody, rad27 antibody, Serine/threonine protein kinase Chk1 antibody, Serine/threonine-protein kinase CHK1 antibody, STT3, subunit of the oligosaccharyltransferase complex, homolog A (S. cerevisiae) antibody

UniProt: [O14757](#)

Pathways: [p53 Signaling](#), [Apoptosis](#), [Cell Division Cycle](#), [DNA Damage Repair](#)

Application Details

Application Notes: WB:1:500-1:2000, IF:1:200-1:1000, ELISA:1:40000,

Restrictions: For Research Use only

Handling

Format: Liquid

Buffer: Liquid in PBS containing 50 % glycerol, 0.5 % BSA and 0.02 % sodium azide.

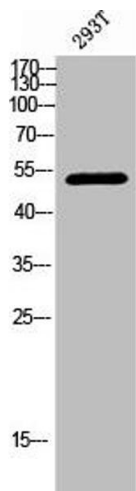
Preservative: Sodium azide

Precaution of Use: This product contains Sodium azide: a POISONOUS AND HAZARDOUS SUBSTANCE which should be handled by trained staff only.

Storage: -20 °C,-80 °C

Storage Comment: Upon receipt, store at -20°C or -80°C. Avoid repeated freeze.

Images



Western Blotting

Image 1. Western Blot analysis of 293T cells using Phospho-Chk1 (S301) Polyclonal Antibody