

Datasheet for ABIN7180903
anti-CrkL antibody (pTyr207)[Go to Product page](#)

1 Image

Overview

Quantity:	100 µg
Target:	CrkL (CRKL)
Binding Specificity:	pTyr207
Reactivity:	Human
Host:	Rabbit
Clonality:	Polyclonal
Conjugate:	This CrkL antibody is un-conjugated
Application:	Western Blotting (WB), ELISA, Immunohistochemistry (IHC), Immunofluorescence (IF)

Product Details

Immunogen:	Synthesized peptide derived from Human Crk-L around the phosphorylation site of Y207.
Isotype:	IgG
Cross-Reactivity:	Human, Monkey, Mouse, Rat
Purification:	The antibody was affinity-purified from rabbit antiserum by affinity-chromatography using epitope-specific immunogen.

Target Details

Target:	CrkL (CRKL)
Alternative Name:	CRKL (CRKL Products)
Background:	Crk L antibody, Crk like protein antibody, Crk-like protein antibody, Crkl antibody, CRKL_HUMAN

Target Details

antibody, Crkol antibody, HGNC:2363 antibody, Oncogene CrkL antibody, V crk avian sarcoma virus CT10 oncogene homolog like antibody, v crk sarcoma virus CT10 oncogene homolog (avian) like antibody, V crk sarcoma virus CT10 oncogene homolog avian like antibody

UniProt:	P46109
Pathways:	Interferon-gamma Pathway , Neurotrophin Signaling Pathway , Signaling of Hepatocyte Growth Factor Receptor

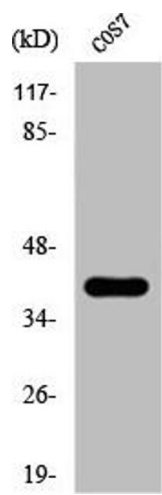
Application Details

Application Notes:	WB:1:500-1:2000, IHC:1:100-1:300, IF:1:200-1:1000, ELISA:1:5000,
Restrictions:	For Research Use only

Handling

Format:	Liquid
Buffer:	Liquid in PBS containing 50 % glycerol, 0.5 % BSA and 0.02 % sodium azide.
Preservative:	Sodium azide
Precaution of Use:	This product contains Sodium azide: a POISONOUS AND HAZARDOUS SUBSTANCE which should be handled by trained staff only.
Storage:	-20 °C,-80 °C
Storage Comment:	Upon receipt, store at -20°C or -80°C. Avoid repeated freeze.

Images



Western Blotting

Image 1. Western Blot analysis of COS7 cells using Phospho-Crk-L (Y207) Polyclonal Antibody