



[Go to Product page](#)

Datasheet for ABIN7180924

## anti-Cullin 1 antibody

### 4 Images

#### Overview

Quantity:	100 µL
Target:	Cullin 1 (CUL1)
Reactivity:	Human
Host:	Rabbit
Clonality:	Polyclonal
Conjugate:	This Cullin 1 antibody is un-conjugated
Application:	Western Blotting (WB), ELISA, Immunohistochemistry (IHC), Immunofluorescence (IF)

#### Product Details

Immunogen:	Synthesized peptide derived from Human Cullin 1.
Isotype:	IgG
Cross-Reactivity:	Human, Mouse
Purification:	The antibody was affinity-purified from rabbit antiserum by affinity-chromatography using epitope-specific immunogen.

#### Target Details

Target:	Cullin 1 (CUL1)
Alternative Name:	CUL1 ( <a href="#">CUL1 Products</a> )
Background:	Background: Core component of multiple cullin-RING-based SCF (SKP1-CUL1-F-box protein) E3 ubiquitin-protein ligase complexes, which mediate the ubiquitination of proteins involved in cell cycle progression, signal transduction and transcription. In the SCF complex, serves as a rigid

## Target Details

---

scaffold that organizes the SKP1-F-box protein and RBX1 subunits. May contribute to catalysis through positioning of the substrate and the ubiquitin-conjugating enzyme. The E3 ubiquitin-protein ligase activity of the complex is dependent on the neddylation of the cullin subunit and exchange of the substrate recognition component is mediated by TIP120A/CAND1. The functional specificity of the SCF complex depends on the F-box protein as substrate recognition component. SCF(BTRC) and SCF(FBXW11) direct ubiquitination of CTNNB1 and participate in Wnt signaling. SCF(FBXW11) directs ubiquitination of phosphorylated NFKBIA. SCF(BTRC) directs ubiquitination of NFKBIB, NFKBIE, ATF4, SMAD3, SMAD4, CDC25A, FBXO5 and probably NFKB2. SCF(SKP2) directs ubiquitination of phosphorylated CDKN1B/p27kip and is involved in regulation of G1/S transition. SCF(SKP2) directs ubiquitination of ORC1, CDT1, RBL2, ELF4, CDKN1A, RAG2, FOXO1A, and probably MYC and TAL1. SCF(FBXW7) directs ubiquitination of cyclin E, NOTCH1 released notch intracellular domain (NICD), and probably PSEN1. SCF(FBXW2) directs ubiquitination of GCM1. SCF(FBXO32) directs ubiquitination of MYOD1. SCF(FBXO7) directs ubiquitination of BIRC2 and DLGAP5. SCF(FBXO33) directs ubiquitination of YBX1. SCF(FBXO1) directs ubiquitination of BCL6 and DTL but does not seem to direct ubiquitination of TP53. SCF(BTRC) mediates the ubiquitination of NFKBIA at 'Lys-21' and 'Lys-22', the degradation frees the associated NFKB1-RELA dimer to translocate into the nucleus and to activate transcription. SCF(CCNF) directs ubiquitination of CCP110. SCF(FBXL3) and SCF(FBXL21) direct ubiquitination of CRY1 and CRY2. SCF(FBXO9) direct ubiquitination of TTI1 and TELO2. SCF(FBXO10) directs ubiquitination of BCL2.

K Kominami, Genes Cells, Nov 1998, 3: 721 - 735.

Jennifer Moon, Plant Physiology, Feb 2007, 143: 684 - 696.

Maria Burnatowska-Hledin, Am J Physiol Cell Physiol, Jul 2000, 279: C266 - C273.

Joseph Khoury, J. Clin. Invest., Mar 2007, 117: 703 - 711.

Aliases: CUL 1 antibody, CUL-1 antibody, CUL1 antibody, CUL1\_HUMAN antibody, Cullin-1 antibody, Cullin1 antibody, MGC149834 antibody, MGC149835 antibody

---

UniProt: [Q13616](#)

Pathways: [Cell Division Cycle](#), [Hedgehog Signaling](#), [Mitotic G1-G1/S Phases](#), [Regulation of Cell Size](#)

## Application Details

---

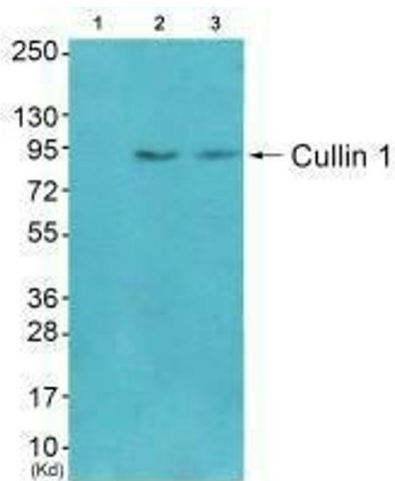
Application Notes: WB:1:500-1:3000, IHC:1:50-1:100, IF:1:100-1:500,

Restrictions: For Research Use only

## Handling

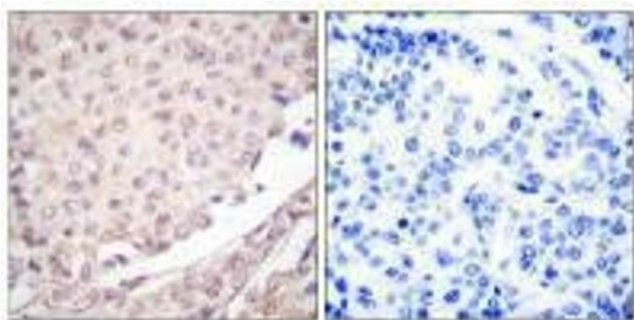
Format:	Liquid
Buffer:	Rabbit IgG in phosphate buffered saline (without Mg <sup>2+</sup> and Ca <sup>2+</sup> ), pH 7.4, 150 mM NaCl, 0.02 % sodium azide and 50 % glycerol.
Preservative:	Sodium azide
Precaution of Use:	This product contains Sodium azide: a POISONOUS AND HAZARDOUS SUBSTANCE which should be handled by trained staff only.
Storage:	-20 °C,-80 °C
Storage Comment:	Upon receipt, store at -20°C or -80°C. Avoid repeated freeze.

## Images



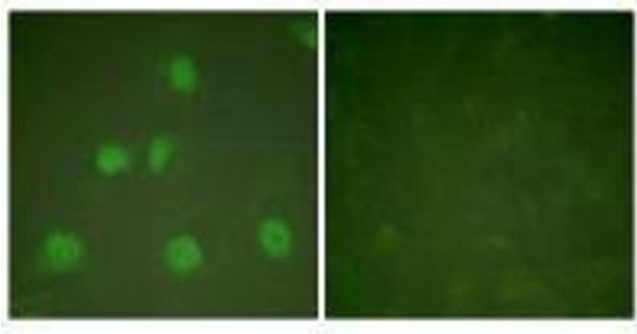
### Western Blotting

**Image 1.** Western blot analysis of extracts from CoLo cells (Lane 2) and 3T3 cells (Lane 3), using Cullin 1 antibody. The lane on the left is treated with synthesized peptide.



### Immunohistochemistry

**Image 2.** Immunohistochemical analysis of paraffin-embedded human lung carcinoma tissue using Cullin 1 antibody.



### Immunofluorescence

**Image 3.** Immunofluorescence analysis of HeLa cells, treated with PMA (125 ng/mL, 30 mins), using Cullin 1 antibody.

Please check the [product details page](#) for more images. Overall 4 images are available for ABIN7180924.