



Datasheet for ABIN7180926
anti-Cyclin A1 antibody



[Go to Product page](#)

4 Images

Overview

Quantity:	100 µL
Target:	Cyclin A1 (CCNA1)
Reactivity:	Human
Host:	Rabbit
Clonality:	Polyclonal
Conjugate:	This Cyclin A1 antibody is un-conjugated
Application:	Western Blotting (WB), ELISA, Immunohistochemistry (IHC), Immunofluorescence (IF)

Product Details

Immunogen:	Synthesized peptide derived from Human Cyclin A.
Isotype:	IgG
Cross-Reactivity:	Human, Mouse
Purification:	The antibody was affinity-purified from rabbit antiserum by affinity-chromatography using epitope-specific immunogen.

Target Details

Target:	Cyclin A1 (CCNA1)
Alternative Name:	CCNA1 (CCNA1 Products)
Background:	Background: May be involved in the control of the cell cycle at the G1/S (start) and G2/M (mitosis) transitions. May primarily function in the control of the germline meiotic cell cycle and additionally in the control of mitotic cell cycle in some somatic cells.

Target Details

Jason S. Knight, J. Virol., Dec 2004, 78: 12857 - 12867.

Motoo Katabami, J. Biol. Chem., Apr 2005, 280: 16728 - 16738.

Karen E. Knudsen, J. Biol. Chem., Sep 1999, 274: 27632.

Peng Ji, J. Biol. Chem., Aug 2006, 281: 24058 - 24069.

Aliases: CCN A1 antibody, CCNA 1 antibody, Ccna1 antibody, CCNA1_HUMAN antibody, Cyclin-A1 antibody, CyclinA1 antibody, G2/mitotic specific cyclin A1 antibody, MGC132235 antibody, MGC159139 antibody

UniProt: [P78396](#)

Pathways: [Apoptosis](#), [Cell Division Cycle](#), [AMPK Signaling](#), [Mitotic G1-G1/S Phases](#), [DNA Replication](#), [M Phase](#), [Synthesis of DNA](#)

Application Details

Application Notes: WB:1:500-1:3000, IHC:1:50-1:100, IF:1:100-1:500,

Restrictions: For Research Use only

Handling

Format: Liquid

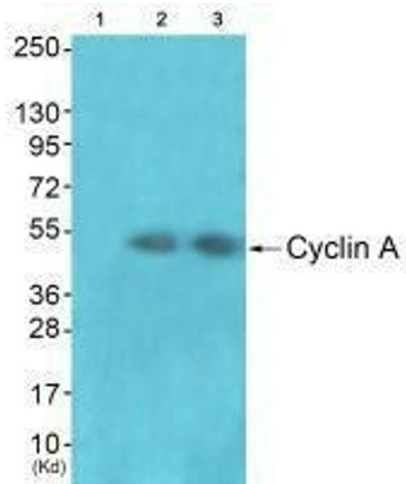
Buffer: Rabbit IgG in phosphate buffered saline (without Mg²⁺ and Ca²⁺), pH 7.4, 150 mM NaCl, 0.02 % sodium azide and 50 % glycerol.

Preservative: Sodium azide

Precaution of Use: This product contains Sodium azide: a POISONOUS AND HAZARDOUS SUBSTANCE which should be handled by trained staff only.

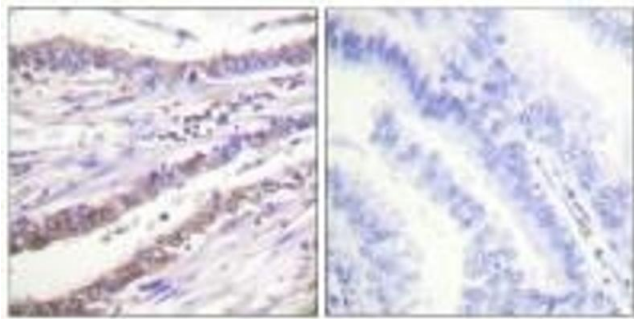
Storage: -20 °C,-80 °C

Storage Comment: Upon receipt, store at -20°C or -80°C. Avoid repeated freeze.



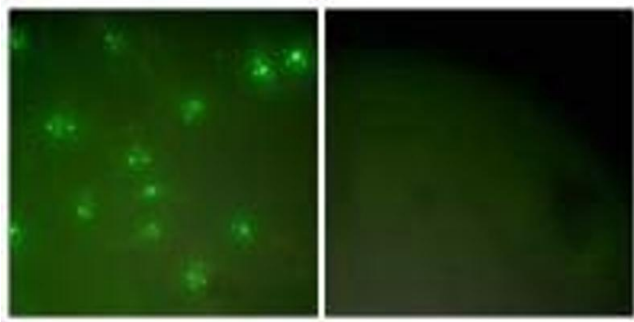
Western Blotting

Image 1. Western blot analysis of extracts from JK cells (Lane 2) and cos-7 cells (Lane 3), using Cyclin A antibody. The lane on the left is treated with synthesized peptide.



Immunohistochemistry

Image 2. Immunohistochemical analysis of paraffin-embedded human lung carcinoma tissue using Cyclin A antibody.



Immunofluorescence

Image 3. Immunofluorescence analysis of COS7 cells, using Cyclin A antibody.

Please check the [product details page](#) for more images. Overall 4 images are available for ABIN7180926.