

Datasheet for ABIN7180955
anti-Cytokeratin 1 antibody



[Go to Product page](#)

1 Image

Overview

Quantity:	100 µL
Target:	Cytokeratin 1 (KRT1)
Reactivity:	Human
Host:	Mouse
Clonality:	Monoclonal
Conjugate:	This Cytokeratin 1 antibody is un-conjugated
Application:	Immunohistochemistry (IHC), ELISA

Product Details

Immunogen:	Synthesized peptide derived from human Cytokeratin 1
Isotype:	IgG1 kappa
Cross-Reactivity:	Human
Purification:	Affinity purified

Target Details

Target:	Cytokeratin 1 (KRT1)
Alternative Name:	KRT1 (KRT1 Products)
Background:	<p>Background: May regulate the activity of kinases such as PKC and SRC via binding to integrin beta-1 (ITB1) and the receptor of activated protein C kinase 1 (RACK1). In complex with C1QBP is a high affinity receptor for kininogen-1/HMWK.</p> <p>Aliases: Keratin, type II cytoskeletal 1 (67 kDa cytokeratin) (Cytokeratin-1) (CK-1) (Hair alpha</p>

Target Details

protein) (Keratin-1) (K1) (Type-II keratin Kb1), KRT1, KRTA

UniProt: [P04264](#)

Application Details

Application Notes: Recommended dilution: IHC:1:20-1:200,

Restrictions: For Research Use only

Handling

Format: Liquid

Buffer: Liquid in PBS containing 50 % glycerol, 0.5 % BSA and 0.02 % sodium azide.

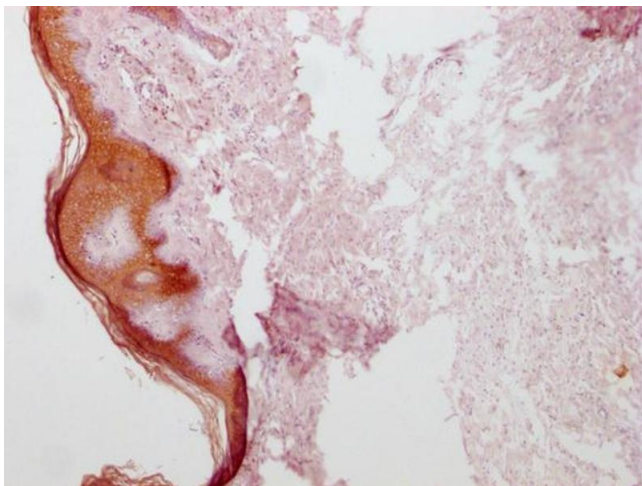
Preservative: Sodium azide

Precaution of Use: This product contains Sodium azide: a POISONOUS AND HAZARDOUS SUBSTANCE which should be handled by trained staff only.

Storage: -20 °C,-80 °C

Storage Comment: Upon receipt, store at -20°C or -80°C. Avoid repeated freeze.

Images



Immunohistochemistry

Image 1. IHC image of ABIN7180955 diluted at 1:100 and staining in paraffin-embedded human skin tissue performed on a Leica Bond™ system. After dewaxing and hydration, antigen retrieval was mediated by high pressure in a citrate buffer (pH 6.0). Section was blocked with 10 % normal goat serum 30 min at RT. Then primary antibody (1 % BSA) was incubated at 4 °C overnight. The primary is detected by a Goat anti-mouse IgG polymer labeled by HRP and visualized using 0.05 % DAB.