

Datasheet for ABIN7180960

**anti-KRT17 antibody****2** Images[Go to Product page](#)

## Overview

Quantity:	100 µL
Target:	KRT17
Reactivity:	Human
Host:	Mouse
Clonality:	Monoclonal
Conjugate:	This KRT17 antibody is un-conjugated
Application:	Immunohistochemistry (IHC), ELISA

## Product Details

Immunogen:	Synthesized peptide derived from human Cytokeratin 17
Isotype:	IgG1 kappa
Cross-Reactivity:	Human
Purification:	Affinity purified

## Target Details

Target:	KRT17
Alternative Name:	KRT17 ( <a href="#">KRT17 Products</a> )
Background:	KRT17, Keratin, type I cytoskeletal 17, 39.1, Cytokeratin-17, CK-17, Keratin-17, K17
UniProt:	<a href="#">Q04695</a>

## Application Details

---

Application Notes: Recommended dilution: IHC:1:20-1:200,

Restrictions: For Research Use only

## Handling

---

Format: Liquid

Buffer: Liquid in PBS containing 50 % glycerol, 0.5 % BSA and 0.02 % sodium azide.

Preservative: Sodium azide

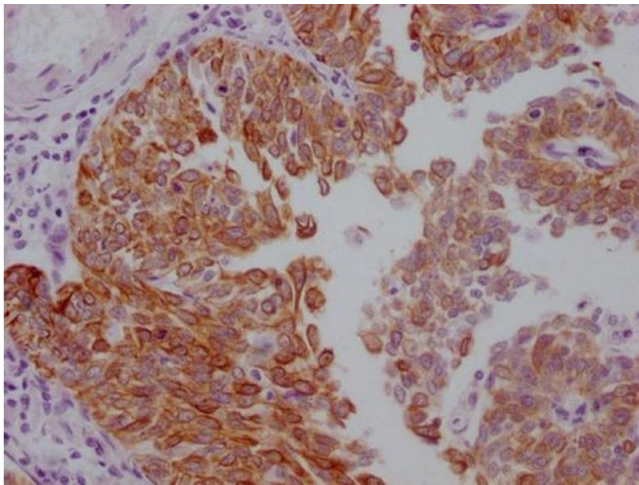
Precaution of Use: This product contains Sodium azide: a POISONOUS AND HAZARDOUS SUBSTANCE which should be handled by trained staff only.

Storage: -20 °C,-80 °C

Storage Comment: Upon receipt, store at -20°C or -80°C. Avoid repeated freeze.

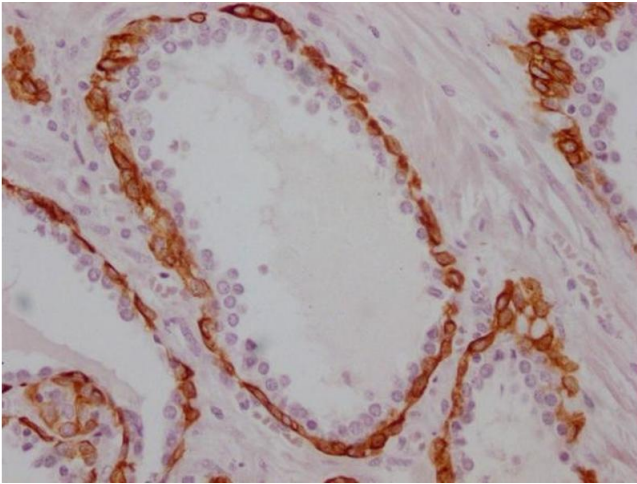
## Images

---



### Immunohistochemistry

**Image 1.** IHC image of ABIN7180960 diluted at 1:100 and staining in paraffin-embedded human cervical cancer performed on a Leica Bond™ system. After dewaxing and hydration, antigen retrieval was mediated by high pressure in a citrate buffer (pH 6.0). Section was blocked with 10 % normal goat serum 30 min at RT. Then primary antibody (1 % BSA) was incubated at 4 °C overnight. The primary is detected by a Goat anti-mouse IgG polymer labeled by HRP and visualized using 0.05 % DAB.



### Immunohistochemistry

**Image 2.** IHC image of ABIN7180960 diluted at 1:100 and staining in paraffin-embedded human prostate cancer performed on a Leica Bond™ system. After dewaxing and hydration, antigen retrieval was mediated by high pressure in a citrate buffer (pH 6.0). Section was blocked with 10 % normal goat serum 30 min at RT. Then primary antibody (1 % BSA) was incubated at 4 °C overnight. The primary is detected by a Goat anti-mouse IgG polymer labeled by HRP and visualized using 0.05 % DAB.