

Datasheet for ABIN7180988

anti-DARPP32 antibody (pThr34)**2** Images[Go to Product page](#)

Overview

Quantity:	100 µg
Target:	DARPP32 (PPP1R1B)
Binding Specificity:	pThr34
Reactivity:	Human
Host:	Rabbit
Clonality:	Polyclonal
Conjugate:	This DARPP32 antibody is un-conjugated
Application:	Western Blotting (WB), Immunohistochemistry (IHC), ELISA, Immunofluorescence (IF)

Product Details

Immunogen:	Synthesized peptide derived from Human DARPP-32 around the phosphorylation site of T34.
Isotype:	IgG
Cross-Reactivity:	Human, Mouse, Rat
Purification:	The antibody was affinity-purified from rabbit antiserum by affinity-chromatography using epitope-specific immunogen.

Target Details

Target:	DARPP32 (PPP1R1B)
Alternative Name:	PPP1R1B (PPP1R1B Products)
Background:	DARPP 32 antibody, DARPP-32 antibody, Dopamine and cAMP regulated neuronal

Target Details

phosphoprotein 32 antibody, Dopamine and cAMP regulated neuronal phosphoprotein antibody, Dopamine and cAMP regulated phosphoprotein antibody, Dopamine and cAMP regulated phosphoprotein DARPP 32 antibody, Dopamine and cAMP regulated phosphoprotein DARPP32 antibody, Dopamine- and cAMP-regulated neuronal phosphoprotein antibody, FLJ20940 antibody, IPPD antibody, Neuronal phosphoprotein DARPP 32 antibody, PPP1R1B antibody, PPR1B_HUMAN antibody, Protein phosphatase 1 regulatory (inhibitor) subunit 1B antibody, Protein phosphatase 1 regulatory inhibitor subunit 1B antibody, Protein phosphatase 1 regulatory subunit 1B antibody

UniProt: [Q9UD71](#)

Application Details

Application Notes: WB:1:500-1:2000, IHC:1:100-1:300, IF:1:200-1:1000, ELISA:1:10000,

Restrictions: For Research Use only

Handling

Format: Liquid

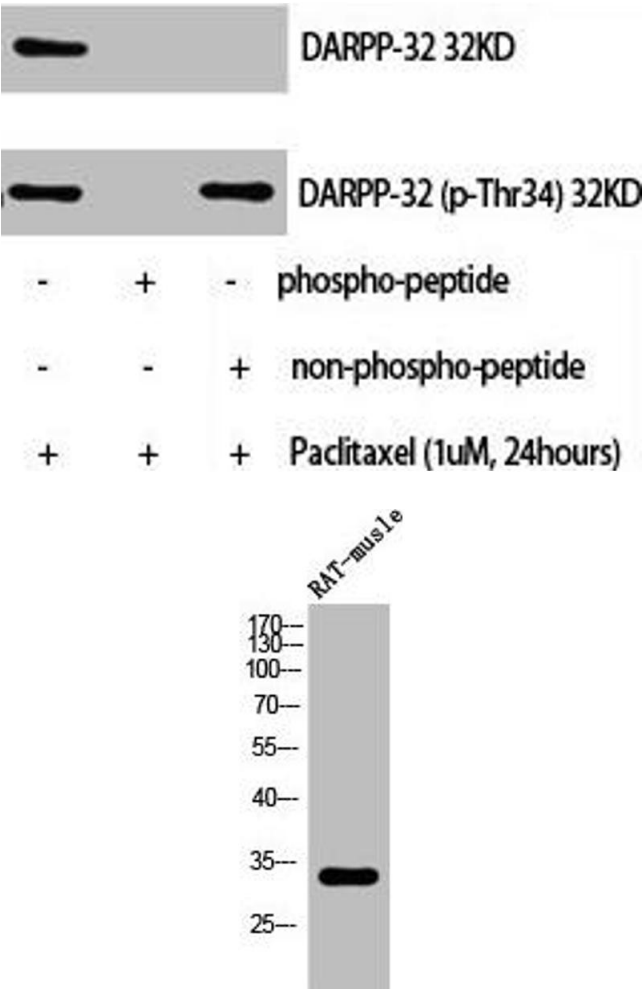
Buffer: Liquid in PBS containing 50 % glycerol, 0.5 % BSA and 0.02 % sodium azide.

Preservative: Sodium azide

Precaution of Use: This product contains Sodium azide: a POISONOUS AND HAZARDOUS SUBSTANCE which should be handled by trained staff only.

Storage: -20 °C, -80 °C

Storage Comment: Upon receipt, store at -20°C or -80°C. Avoid repeated freeze.



Western Blotting

Image 1. Western Blot analysis of NIH-3T3+paclitaxel cells using Phospho-DARPP-32 (T34) Polyclonal Antibody

Western Blotting

Image 2. Western Blot analysis of RAT-muscle cells using Phospho-DARPP-32 (T34) Polyclonal Antibody