



[Go to Product page](#)

Datasheet for ABIN7181016  
**anti-CD226 antibody (pSer329)**

1 Image

Overview

Quantity:	100 µg
Target:	CD226
Binding Specificity:	pSer329
Reactivity:	Human
Host:	Rabbit
Clonality:	Polyclonal
Conjugate:	This CD226 antibody is un-conjugated
Application:	Western Blotting (WB), ELISA, Immunohistochemistry (IHC), Immunofluorescence (IF)

Product Details

Immunogen:	Synthesized peptide derived from Human DNAM-1 around the phosphorylation site of S329.
Isotype:	IgG
Cross-Reactivity:	Human, Monkey, Mouse
Purification:	The antibody was affinity-purified from rabbit antiserum by affinity-chromatography using epitope-specific immunogen.

Target Details

Target:	CD226
Alternative Name:	CD226 ( <a href="#">CD226 Products</a> )
Background:	Adhesion glycoprotein antibody, CD226 antibody, CD226 antigen antibody, CD226 Molecule

## Target Details

antibody, CD226\_HUMAN antibody, DNAM 1 antibody, DNAM-1 antibody, DNAM1 antibody, DNAX accessory molecule 1 antibody, platelet and T cell activation antigen 1 antibody, PTA1 antibody, T lineage specific activation antigen 1 antigen antibody, TLISA1 antibody

UniProt: [Q15762](#)

Pathways: [Regulation of Leukocyte Mediated Immunity](#), [Positive Regulation of Immune Effector Process](#), [Cancer Immune Checkpoints](#)

## Application Details

Application Notes: WB:1:500-1:2000, IHC:1:100-1:300, IF:1:200-1:1000, ELISA:1:40000,

Restrictions: For Research Use only

## Handling

Format: Liquid

Buffer: Liquid in PBS containing 50 % glycerol, 0.5 % BSA and 0.02 % sodium azide.

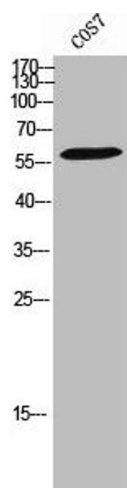
Preservative: Sodium azide

Precaution of Use: This product contains Sodium azide: a POISONOUS AND HAZARDOUS SUBSTANCE which should be handled by trained staff only.

Storage: -20 °C,-80 °C

Storage Comment: Upon receipt, store at -20°C or -80°C. Avoid repeated freeze.

## Images



### Western Blotting

**Image 1.** Western Blot analysis of COS7 cells using Phospho-DNAM-1 (S329) Polyclonal Antibody