



[Go to Product page](#)

Datasheet for ABIN7181039  
**anti-Dysferlin antibody**

2 Images

Overview

Quantity:	100 µL
Target:	Dysferlin (DYSF)
Reactivity:	Human
Host:	Rabbit
Clonality:	Polyclonal
Conjugate:	This Dysferlin antibody is un-conjugated
Application:	Western Blotting (WB), ELISA

Product Details

Immunogen:	Synthesized peptide derived from Human Dysferlin.
Isotype:	IgG
Cross-Reactivity:	Human, Mouse
Purification:	The antibody was affinity-purified from rabbit antiserum by affinity-chromatography using epitope-specific immunogen.

Target Details

Target:	Dysferlin (DYSF)
Alternative Name:	DYSF ( <a href="#">DYSF Products</a> )
Background:	Background: Key calcium ion sensor involved in the Ca <sup>2+</sup> -triggered synaptic vesicle-plasma membrane fusion. Plays a role in the sarcolemma repair mechanism of both skeletal muscle and cardiomyocytes that permits rapid resealing of membranes disrupted by mechanical stress

## Target Details

---

By similarity.

Delia J. Hernandez-Deviez, Hum. Mol. Genet., Jan 2006, 15: 129 - 142.

Yanchao Huang, FASEB J, Mar 2007, 21: 732 - 742.

Mengfatt Ho, Hum. Mol. Genet., Sep 2004, 13: 1999 - 2010.

Eriko Fujita, Hum. Mol. Genet., Mar 2007, 16: 618 - 629.

Aliases: DMAT antibody, DYSF antibody, DYSF\_HUMAN antibody, Dysferlin antibody, Dysferlin limb girdle muscular dystrophy 2B (autosomal recessive) antibody, Dysferlin limb girdle muscular dystrophy 2B antibody, Dystrophy associated fer 1 like 1 antibody, Dystrophy associated fer 1 like protein antibody, Dystrophy associated fer1 like 1 antibody, Dystrophy associated fer1 like protein antibody, Dystrophy-associated fer-1-like protein antibody, Fer 1 like protein 1 antibody, Fer-1-like protein 1 antibody, Fer1 like protein 1 antibody, FER1L1 antibody, FLJ00175 antibody, FLJ90168 antibody, LGMD 2B antibody, LGMD2B antibody, Limb girdle muscular dystrophy 2B (autosomal recessive) antibody, Limb girdle muscular dystrophy 2B antibody, Miyoshi myopathy antibody, MM antibody, MMD1 antibody

---

UniProt: [O75923](#)

## Application Details

---

Application Notes: WB:1:500-1:3000,

Restrictions: For Research Use only

## Handling

---

Format: Liquid

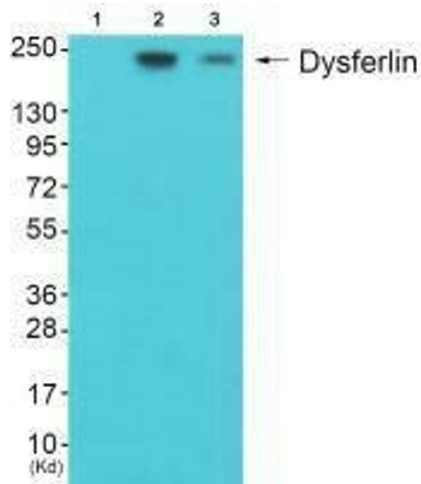
Buffer: Rabbit IgG in phosphate buffered saline (without Mg<sup>2+</sup> and Ca<sup>2+</sup>), pH 7.4, 150 mM NaCl, 0.02 % sodium azide and 50 % glycerol.

Preservative: Sodium azide

Precaution of Use: This product contains Sodium azide: a POISONOUS AND HAZARDOUS SUBSTANCE which should be handled by trained staff only.

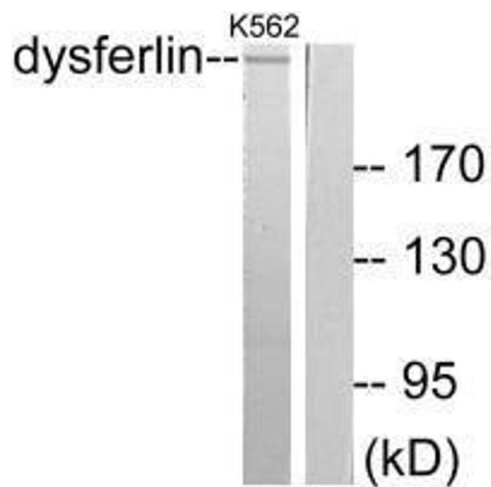
Storage: -20 °C,-80 °C

Storage Comment: Upon receipt, store at -20°C or -80°C. Avoid repeated freeze.



#### Western Blotting

**Image 1.** Western blot analysis of extracts from JK cells (Lane 2) and K562 cells (Lane 3), using Dysferlin antibody. The lane on the left is treated with synthesized peptide.



#### Western Blotting

**Image 2.** Western blot analysis of extracts from K562 cells, using Dysferlin antibody.