

Datasheet for ABIN7181049
anti-S1PR1 antibody (pThr236)[Go to Product page](#)

1 Image

Overview

Quantity:	100 µg
Target:	S1PR1
Binding Specificity:	pThr236
Reactivity:	Human
Host:	Rabbit
Clonality:	Polyclonal
Conjugate:	This S1PR1 antibody is un-conjugated
Application:	Western Blotting (WB), ELISA, Immunofluorescence (IF)

Product Details

Immunogen:	Synthesized peptide derived from Human EDG-1 around the phosphorylation site of T236.
Isotype:	IgG
Cross-Reactivity:	Human, Mouse, Rat
Purification:	The antibody was affinity-purified from rabbit antiserum by affinity-chromatography using epitope-specific immunogen.

Target Details

Target:	S1PR1
Alternative Name:	S1PR1 (S1PR1 Products)
Background:	CD363 antibody, CHEDG 1 antibody, CHEDG1 antibody, D1S3362 antibody, ECGF 1 antibody,

Target Details

ECGF1 antibody, EDG 1 antibody, EDG1 antibody, endothelial differentiation G protein coupled receptor 1 antibody, Endothelial differentiation G-protein coupled receptor 1 antibody, Endothelial differentiation sphingolipid G protein coupled receptor 1 antibody, FLJ58121 antibody, G protein coupled sphingolipid receptor antibody, g protein-coupled receptor edg-1 antibody, S1P receptor 1 antibody, S1P receptor Edg 1 antibody, S1P receptor Edg-1 antibody, S1P receptor Edg1 antibody, S1P(1) receptor antibody, S1P1 antibody, s1pr1 antibody, S1PR1_HUMAN antibody, sphingolipid g-protein-coupled receptor 1 antibody, Sphingosine 1 phosphate receptor Edg 1 antibody, Sphingosine 1 phosphate receptor EDG1 antibody, sphingosine 1- phosphate receptor 1 antibody, Sphingosine 1-phosphate receptor 1 antibody, Sphingosine 1-phosphate receptor Edg-1 antibody, Sphingosine 1phosphate receptor type 1 S1P1 antibody

UniProt: [P21453](#)

Pathways: [Signaling Events mediated by VEGFR1 and VEGFR2](#)

Application Details

Application Notes: IF:1:200-1:1000, ELISA:1:10000,

Restrictions: For Research Use only

Handling

Format: Liquid

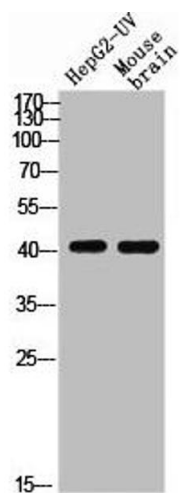
Buffer: Liquid in PBS containing 50 % glycerol, 0.5 % BSA and 0.02 % sodium azide.

Preservative: Sodium azide

Precaution of Use: This product contains Sodium azide: a POISONOUS AND HAZARDOUS SUBSTANCE which should be handled by trained staff only.

Storage: -20 °C,-80 °C

Storage Comment: Upon receipt, store at -20°C or -80°C. Avoid repeated freeze.



Western Blotting

Image 1. Western blot analysis of HEPG2-UV MOUSE-BRAIN using p-EDG-1 (T236) antibody.