

Datasheet for ABIN7181056  
**anti-KIF11 antibody**



[Go to Product page](#)

2 Images

## Overview

Quantity:	100 µg
Target:	KIF11
Reactivity:	Human
Host:	Rabbit
Clonality:	Polyclonal
Conjugate:	This KIF11 antibody is un-conjugated
Application:	Western Blotting (WB), ELISA, Immunohistochemistry (IHC), Immunofluorescence (IF)

## Product Details

Immunogen:	Synthesized peptide derived from Human Eg5 around the non-phosphorylation site of T926.
Isotype:	IgG
Cross-Reactivity:	Human
Purification:	The antibody was affinity-purified from rabbit antiserum by affinity-chromatography using epitope-specific immunogen.

## Target Details

Target:	KIF11
Alternative Name:	KIF11 ( <a href="#">KIF11 Products</a> )
Background:	EG5 antibody, HKSP antibody, KIF11 antibody, KIF11_HUMAN antibody, Kinesin family member 11 antibody, Kinesin like protein 1 antibody, Kinesin-like protein 1 antibody, Kinesin-like protein KIF11 antibody, Kinesin-like spindle protein HKSP antibody, Kinesin-related motor protein Eg5

## Target Details

antibody, KNSL1 antibody, MCLMR antibody, Thyroid receptor-interacting protein 5 antibody, TR-interacting protein 5 antibody, TRIP-5 antibody, TRIP5 antibody

UniProt: [P52732](#)

## Application Details

Application Notes: WB:1:500-1:2000, IHC:1:100-1:300, IF:1:200-1:1000, ELISA:1:20000,

Restrictions: For Research Use only

## Handling

Format: Liquid

Buffer: Liquid in PBS containing 50 % glycerol, 0.5 % BSA and 0.02 % sodium azide.

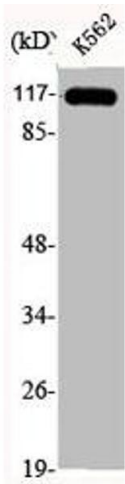
Preservative: Sodium azide

Precaution of Use: This product contains Sodium azide: a POISONOUS AND HAZARDOUS SUBSTANCE which should be handled by trained staff only.

Storage: -20 °C,-80 °C

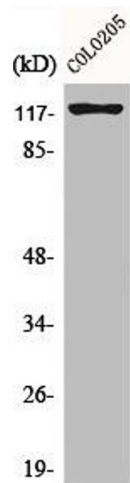
Storage Comment: Upon receipt, store at -20°C or -80°C. Avoid repeated freeze.

## Images



### Western Blotting

**Image 1.** Western Blot analysis of K562 cells using Eg5 Polyclonal Antibody



Western Blotting

**Image 2.** Western Blot analysis of COL0205 cells using Eg5 Polyclonal Antibody