



[Go to Product page](#)

Datasheet for ABIN7181274
anti-FOXO4 antibody (AA 170-200)

1 Image

Overview

Quantity:	100 µg
Target:	FOXO4
Binding Specificity:	AA 170-200
Reactivity:	Human
Host:	Rabbit
Clonality:	Polyclonal
Conjugate:	This FOXO4 antibody is un-conjugated
Application:	Western Blotting (WB), ELISA

Product Details

Immunogen:	Synthesized peptide derived from Human FoxO4. at AA range: 170-200
Isotype:	IgG
Cross-Reactivity:	Human
Purification:	The antibody was affinity-purified from rabbit antiserum by affinity-chromatography using epitope-specific immunogen.

Target Details

Target:	FOXO4
Alternative Name:	FOXO4 (FOXO4 Products)
Background:	AFX antibody, AFX1 antibody, Afxh antibody, ALL1-fused gene from X chromosome antibody,

Target Details

Fork head domain transcription factor AFX1 antibody, Forkhead box O4 antibody, Forkhead box protein O4 antibody, FOXO 4 antibody, Foxo4 antibody, FOXO4_HUMAN antibody, MGC117660 antibody, MGC120490 antibody, Mixed lineage leukemia, translocated to, 7 antibody, MLLT7 antibody, Myeloid/lymphoid or mixed lineage leukemia (trithorax homolog, Drosophila), translocated to, 7 antibody, Myeloid/lymphoid or mixed lineage leukemia, translocated to, 7 antibody, RGD1561201 antibody

UniProt: [P98177](#)

Pathways: [Cell Division Cycle](#), [Fc-epsilon Receptor Signaling Pathway](#), [EGFR Signaling Pathway](#), [Neurotrophin Signaling Pathway](#), [Regulation of Muscle Cell Differentiation](#)

Application Details

Application Notes: WB:1:500-2000, ELISA:1:10000-20000,

Restrictions: For Research Use only

Handling

Format: Liquid

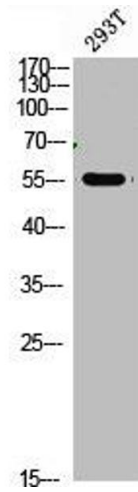
Buffer: Liquid in PBS containing 50 % glycerol, 0.5 % BSA and 0.02 % sodium azide.

Preservative: Sodium azide

Precaution of Use: This product contains Sodium azide: a POISONOUS AND HAZARDOUS SUBSTANCE which should be handled by trained staff only.

Storage: -20 °C,-80 °C

Storage Comment: Upon receipt, store at -20°C or -80°C. Avoid repeated freeze.



Western Blotting

Image 1. Western Blot analysis of 293t cells using primary antibody diluted at 1:1000(4 °C overnight). Secondary antibody:Goat Anti-rabbit IgG IRDye 800(diluted at 1:5000, 25 °C, 1 hour)