



[Go to Product page](#)

Datasheet for ABIN7181320
anti-GCM2 antibody (AA 21-70)

1 Image

Overview

Quantity:	100 µg
Target:	GCM2
Binding Specificity:	AA 21-70
Reactivity:	Human
Host:	Rabbit
Clonality:	Polyclonal
Conjugate:	This GCM2 antibody is un-conjugated
Application:	ELISA, Western Blotting (WB)

Product Details

Immunogen:	Synthesized peptide derived from Human GCM2. at AA range: 21-70
Isotype:	IgG
Cross-Reactivity:	Human, Mouse, Rat
Purification:	The antibody was affinity-purified from rabbit antiserum by affinity-chromatography using epitope-specific immunogen.

Target Details

Target:	GCM2
Alternative Name:	GCM2 (GCM2 Products)
Background:	GCM2 antibody, GCMB antibody, Chorion-specific transcription factor GCMB antibody, hGCMb

Target Details

antibody, GCM motif protein 2 antibody, Glial cells missing homolog 2 antibody

UniProt: [O75603](#)

Application Details

Application Notes: WB:1:500-2000, ELISA:1:10000-20000,

Restrictions: For Research Use only

Handling

Format: Liquid

Buffer: Liquid in PBS containing 50 % glycerol, 0.5 % BSA and 0.02 % sodium azide.

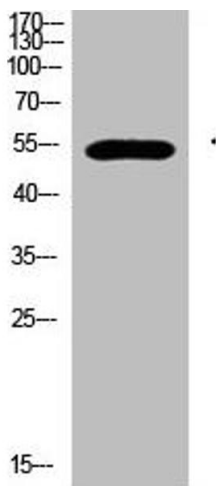
Preservative: Sodium azide

Precaution of Use: This product contains Sodium azide: a POISONOUS AND HAZARDOUS SUBSTANCE which should be handled by trained staff only.

Storage: -20 °C,-80 °C

Storage Comment: Upon receipt, store at -20°C or -80°C. Avoid repeated freeze.

Images



Western Blotting

Image 1. Western Blot analysis of 293T cells using primary antibody diluted at 1:500(4 °C overnight). Secondary antibody:Goat Anti-rabbit IgG IRDye 800(diluted at 1:5000, 25 °C, 1 hour)