



[Go to Product page](#)

Datasheet for ABIN7181414
anti-HIRA antibody (pThr555)

2 Images

Overview

Quantity:	100 µg
Target:	HIRA
Binding Specificity:	pThr555
Reactivity:	Human
Host:	Rabbit
Clonality:	Polyclonal
Conjugate:	This HIRA antibody is un-conjugated
Application:	ELISA, Immunohistochemistry (IHC), Immunofluorescence (IF)

Product Details

Immunogen:	Synthesized peptide derived from Human HIRA around the phosphorylation site of T555.
Isotype:	IgG
Cross-Reactivity:	Human, Mouse
Purification:	The antibody was affinity-purified from rabbit antiserum by affinity-chromatography using epitope-specific immunogen.

Target Details

Target:	HIRA
Alternative Name:	HIRA (HIRA Products)
Background:	DGCR1 antibody, DiGeorge critical region gene 1 antibody, HIR antibody, HIR histone cell cycle

Target Details

regulation defective homolog A antibody, HIRA antibody, HIRA protein antibody, HIRA_HUMAN antibody, Histone cell cycle regulator antibody, Protein HIRA antibody, TUP 1 antibody, TUP1 like enhancer of split protein 1 antibody, TUP1-like enhancer of split protein 1 antibody, TUPLE1 antibody

UniProt: [P54198](#)

Pathways: [Chromatin Binding](#)

Application Details

Application Notes: IHC:1:100-1:300, IF:1:200-1:1000, ELISA:1:10000,

Restrictions: For Research Use only

Handling

Format: Liquid

Buffer: Liquid in PBS containing 50 % glycerol, 0.5 % BSA and 0.02 % sodium azide.

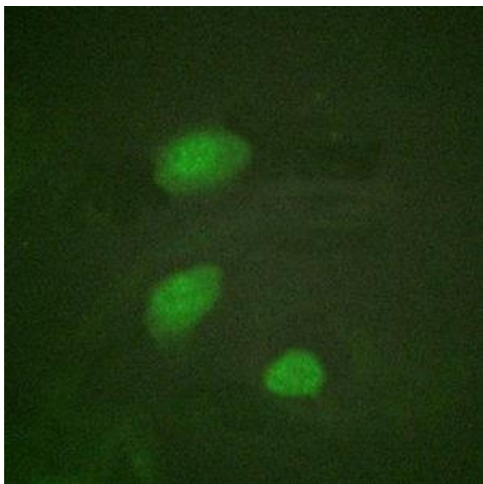
Preservative: Sodium azide

Precaution of Use: This product contains Sodium azide: a POISONOUS AND HAZARDOUS SUBSTANCE which should be handled by trained staff only.

Storage: -20 °C,-80 °C

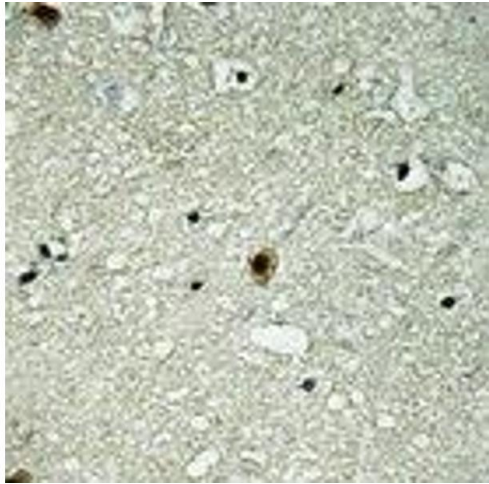
Storage Comment: Upon receipt, store at -20°C or -80°C. Avoid repeated freeze.

Images



Immunofluorescence

Image 1. Immunofluorescent analysis of Hela cells using ABIN7181414 at dilution of 1:200 and Alexa Fluor 488-conjugated AffiniPure Goat Anti-Rabbit IgG(H+L)



Immunohistochemistry

Image 2. Immunohistochemistry of paraffin-embedded human brain using ABIN7181414 at dilution of 1:100