



[Go to Product page](#)

Datasheet for ABIN7181443

anti-Histone H1.3 antibody (AA 13-25)

1 Image

Overview

Quantity:	100 µL
Target:	Histone H1.3 (HIST1H1D)
Binding Specificity:	AA 13-25
Reactivity:	Human
Host:	Rabbit
Clonality:	Polyclonal
Conjugate:	This Histone H1.3 antibody is un-conjugated
Application:	ELISA, Immunohistochemistry (IHC)

Product Details

Immunogen:	Synthesized peptide derived from Human Histone H1.3 protein (13-25aa)
Isotype:	IgG
Cross-Reactivity:	Human
Purification:	Antigen Affinity Purified

Target Details

Target:	Histone H1.3 (HIST1H1D)
Alternative Name:	HIST1H1D (HIST1H1D Products)
Background:	Background: Histone H1 protein binds to linker DNA between nucleosomes forming the macromolecular structure known as the chromatin fiber. Histones H1 are necessary for the

Target Details

condensation of nucleosome chains into higher-order structured fibers. Acts also as a regulator of individual gene transcription through chromatin remodeling, nucleosome spacing and DNA methylation (By similarity).

Aliases: Histone H1.3 (Histone H1c) (Histone H1s-2), HIST1H1D, H1F3

UniProt: [P16402](#)

Application Details

Application Notes: Recommended dilution: IHC:1:10-1:100,

Restrictions: For Research Use only

Handling

Format: Liquid

Buffer: Preservative: 0.03 % Proclin 300
Constituents: 50 % Glycerol, 0.01M PBS, pH 7.4

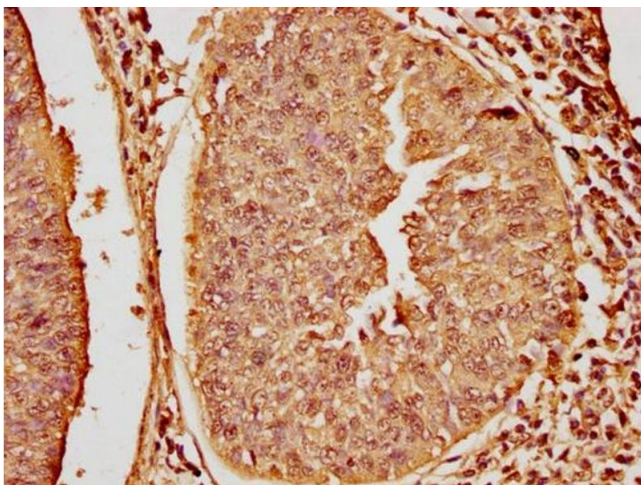
Preservative: ProClin

Precaution of Use: This product contains ProClin: a POISONOUS AND HAZARDOUS SUBSTANCE which should be handled by trained staff only.

Storage: -20 °C,-80 °C

Storage Comment: Upon receipt, store at -20°C or -80°C. Avoid repeated freeze.

Images



Immunohistochemistry

Image 1. IHC image of nme1HU diluted at 1:20 and staining in paraffin-embedded human cervical cancer performed on a Leica Bond™ system. After dewaxing and hydration, antigen retrieval was mediated by high pressure in a citrate buffer (pH 6.0). Section was blocked with 10 % normal goat serum 30 min at RT. Then primary antibody (1 % BSA) was incubated at 4 °C overnight. The primary is detected by a biotinylated secondary antibody and visualized using an HRP conjugated SP system.