



[Go to Product page](#)

Datasheet for ABIN7181465

## anti-Histone H1.5 antibody (AA 14-25)

### 2 Images

#### Overview

Quantity:	100 µL
Target:	Histone H1.5 (HIST1H1B)
Binding Specificity:	AA 14-25
Reactivity:	Human
Host:	Rabbit
Clonality:	Polyclonal
Conjugate:	This Histone H1.5 antibody is un-conjugated
Application:	ELISA, Immunohistochemistry (IHC)

#### Product Details

Immunogen:	Synthesized peptide derived from Human Histone H1.5 protein (14-25aa)
Isotype:	IgG
Cross-Reactivity:	Human
Purification:	Antigen Affinity Purified

#### Target Details

Target:	Histone H1.5 (HIST1H1B)
Alternative Name:	HIST1H1B ( <a href="#">HIST1H1B Products</a> )
Background:	Background: Histone H1 protein binds to linker DNA between nucleosomes forming the macromolecular structure known as the chromatin fiber. Histones H1 are necessary for the

## Target Details

condensation of nucleosome chains into higher-order structured fibers. Acts also as a regulator of individual gene transcription through chromatin remodeling, nucleosome spacing and DNA methylation (By similarity).

Aliases: Histone H1.5 (Histone H1a) (Histone H1b) (Histone H1s-3), HIST1H1B, H1F5

UniProt: [P16401](#)

## Application Details

Application Notes: Recommended dilution: IHC:1:10-1:100,

Restrictions: For Research Use only

## Handling

Format: Liquid

Buffer: Preservative: 0.03 % Proclin 300  
Constituents: 50 % Glycerol, 0.01M PBS, pH 7.4

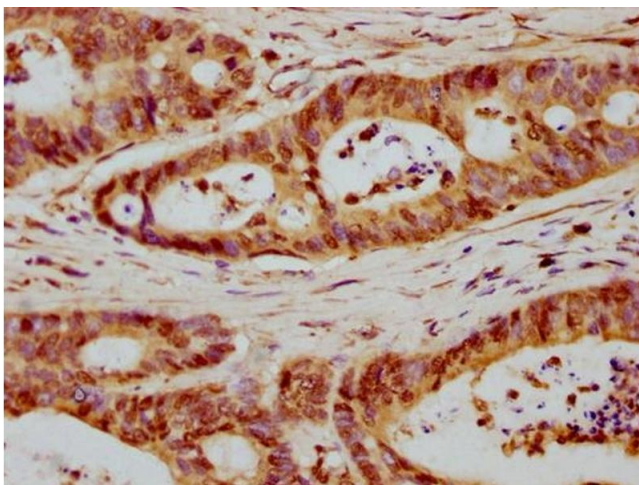
Preservative: ProClin

Precaution of Use: This product contains ProClin: a POISONOUS AND HAZARDOUS SUBSTANCE which should be handled by trained staff only.

Storage: -20 °C,-80 °C

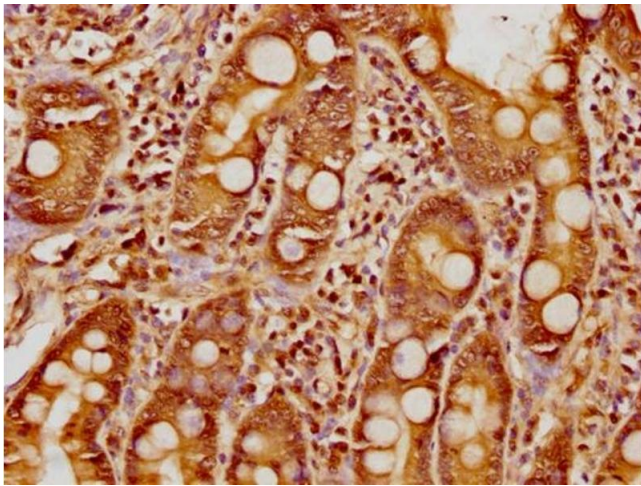
Storage Comment: Upon receipt, store at -20°C or -80°C. Avoid repeated freeze.

## Images



### Immunohistochemistry

**Image 1.** IHC image of nphHU diluted at 1:8 and staining in paraffin-embedded human colon cancer performed on a Leica Bond™ system. After dewaxing and hydration, antigen retrieval was mediated by high pressure in a citrate buffer (pH 6.0). Section was blocked with 10 % normal goat serum 30 min at RT. Then primary antibody (1 % BSA) was incubated at 4 °C overnight. The primary is detected by a biotinylated secondary antibody and visualized using an HRP conjugated SP system.



### Immunohistochemistry

**Image 2.** IHC image of nphHU diluted at 1:8 and staining in paraffin-embedded human small intestine tissue performed on a Leica Bond™ system. After dewaxing and hydration, antigen retrieval was mediated by high pressure in a citrate buffer (pH 6.0). Section was blocked with 10 % normal goat serum 30 min at RT. Then primary antibody (1 % BSA) was incubated at 4 °C overnight. The primary is detected by a biotinylated secondary antibody and visualized using an HRP conjugated SP system.