



Datasheet for ABIN7181470
anti-Histone H1.5 antibody (pSer188)



[Go to Product page](#)

1 Image

Overview

Quantity:	100 µL
Target:	Histone H1.5 (HIST1H1B)
Binding Specificity:	pSer188
Reactivity:	Human
Host:	Rabbit
Clonality:	Polyclonal
Conjugate:	This Histone H1.5 antibody is un-conjugated
Application:	ELISA, Immunocytochemistry (ICC)

Product Details

Immunogen:	Synthesized peptide derived from Human Histone H1.5 protein (184-196aa)
Isotype:	IgG
Cross-Reactivity:	Human
Purification:	Antigen Affinity Purified

Target Details

Target:	Histone H1.5 (HIST1H1B)
Alternative Name:	HIST1H1B (HIST1H1B Products)
Background:	Background: Histone H1 protein binds to linker DNA between nucleosomes forming the macromolecular structure known as the chromatin fiber. Histones H1 are necessary for the

Target Details

condensation of nucleosome chains into higher-order structured fibers. Acts also as a regulator of individual gene transcription through chromatin remodeling, nucleosome spacing and DNA methylation (By similarity).

Aliases: Histone H1.5 (Histone H1a) (Histone H1b) (Histone H1s-3), HIST1H1B, H1F5

UniProt: [P16401](#)

Application Details

Application Notes: Recommended dilution: ICC:1:10-1:100,

Restrictions: For Research Use only

Handling

Format: Liquid

Buffer: Preservative: 0.03 % Proclin 300
Constituents: 50 % Glycerol, 0.01M PBS, pH 7.4

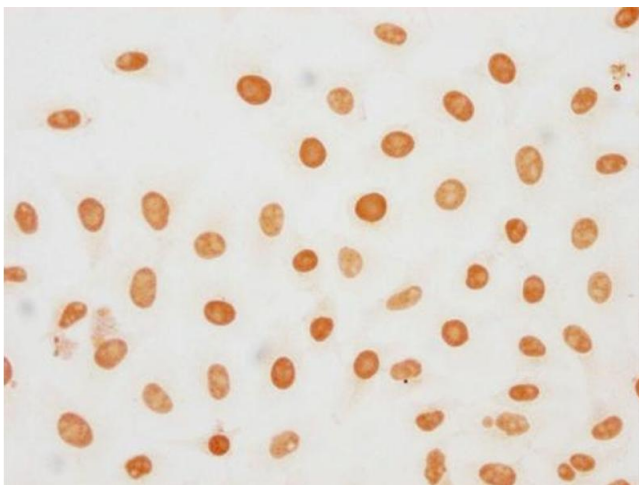
Preservative: ProClin

Precaution of Use: This product contains ProClin: a POISONOUS AND HAZARDOUS SUBSTANCE which should be handled by trained staff only.

Storage: -20 °C,-80 °C

Storage Comment: Upon receipt, store at -20°C or -80°C. Avoid repeated freeze.

Images



Immunocytochemistry

Image 1. Immunocytochemistry analysis of ABIN7181470 diluted at 1:20 and staining in HeLa cells (treated with 50nM Calyculin A for 30 min) performed on a Leica Bond™ system. The cells were fixed in 4 % formaldehyde, permeabilized using 0.2 % Triton X-100 and blocked with 10 % normal goat serum 30 min at RT. Then primary antibody (1 % BSA) was incubated at 4 °C overnight. The primary is detected by a biotinylated secondary antibody and visualized using an HRP conjugated SP system.